

Product datasheet for **TA346017**

MSH2 Rabbit Polyclonal Antibody

Product data:

Product Type:	Primary Antibodies
Applications:	WB
Recommended Dilution:	WB
Reactivity:	Human
Host:	Rabbit
Isotype:	IgG
Clonality:	Polyclonal
Immunogen:	The immunogen for anti-MSH2 antibody: synthetic peptide directed towards the N terminal of human MSH2. Synthetic peptide located within the following region: KMSAVDGQRQVGVGYVDSIQRKLGLCFDPNDQFSNLEALLIQIGPKECV
Formulation:	Liquid. Purified antibody supplied in 1x PBS buffer with 0.09% (w/v) sodium azide and 2% sucrose. <i>Note that this product is shipped as lyophilized powder to China customers.</i>
Purification:	Affinity Purified
Conjugation:	Unconjugated
Storage:	Store at -20°C as received.
Stability:	Stable for 12 months from date of receipt.
Predicted Protein Size:	64 kDa
Gene Name:	mutS homolog 2
Database Link:	NP_000242 Entrez Gene 4436 Human P43246
Background:	MSH2 was identified as a locus frequently mutated in hereditary nonpolyposis colon cancer (HNPCC). When cloned, it was discovered to be a human homolog of the E. coli mismatch repair gene mutS, consistent with the characteristic alterations in microsatellite sequences (RER+ phenotype) found in HNPCC.
Synonyms:	COCA1; FCC1; HNPCC; HNPCC1; LCFS2



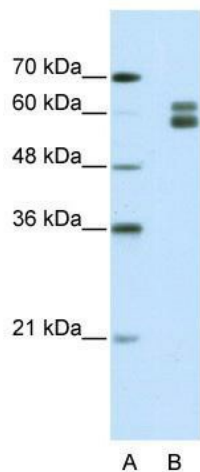
[View online »](#)

Note: Immunogen Sequence Homology: Dog: 100%; Pig: 100%; Rat: 100%; Horse: 100%; Human: 100%; Bovine: 100%; Rabbit: 100%; Zebrafish: 100%; Guinea pig: 100%; Mouse: 93%; Yeast: 85%

Protein Families: Druggable Genome, Stem cell - Pluripotency

Protein Pathways: Colorectal cancer, Mismatch repair, Pathways in cancer

Product images:



WB Suggested Anti-MSH2 Antibody Titration: 1.25 ug/ml; ELISA Titer: 1: 62500; Positive Control: HepG2 cell lysate