

Product datasheet for **TA345862**

Synaptojanin (SYNJ1) Rabbit Polyclonal Antibody

Product data:

Product Type:	Primary Antibodies
Applications:	WB
Recommended Dilution:	WB
Reactivity:	Human
Host:	Rabbit
Isotype:	IgG
Clonality:	Polyclonal
Immunogen:	The immunogen for anti-SYNJ1 antibody: synthetic peptide directed towards the N terminal of human SYNJ1. Synthetic peptide located within the following region: IDSSDEDRISEVRKVLNSGNFYFAWSASGISLDLSDLNAHRSMQEQTTDNR
Formulation:	Liquid. Purified antibody supplied in 1x PBS buffer with 0.09% (w/v) sodium azide and 2% sucrose. <i>Note that this product is shipped as lyophilized powder to China customers.</i>
Purification:	Affinity Purified
Conjugation:	Unconjugated
Storage:	Store at -20°C as received.
Stability:	Stable for 12 months from date of receipt.
Predicted Protein Size:	143 kDa
Gene Name:	synaptojanin 1
Database Link:	NP_982271 Entrez Gene 8867 Human O43426



[View online »](#)

Background: Synaptojanin 1 is a phosphoinositide phosphatase that regulates levels of membrane phosphatidylinositol-4,5-bisphosphate. As such, expression of this enzyme may affect synaptic transmission and membrane trafficking. Synaptojanin-1 is a phosphatidylinositol (4,5)-bisphosphate (PI(4,5)P2) that has a role in clathrin-coated pit dynamics Perera et al. (2006) [PubMed 17158794]. [supplied by OMIM]. Publication Note: This RefSeq record includes a subset of the publications that are available for this gene. Please see the Entrez Gene record to access additional publications. PRIMARYREFSEQ_SPAN PRIMARY_IDENTIFIER PRIMARY_SPAN COMP 1-3383 AB020717.2 1-3383 3384-3539 AF009040.1 3318-3473 3540-4183 AF009039.1 3522-4165 4184-7039 AB020717.2 4142-6997

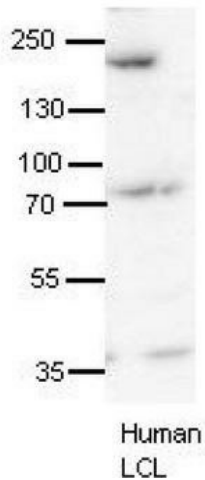
Synonyms: INPP5G; PARK20

Note: Immunogen Sequence Homology: Pig: 100%; Horse: 100%; Human: 100%; Bovine: 100%; Rabbit: 100%; Dog: 93%; Rat: 93%; Mouse: 93%; Guinea pig: 93%

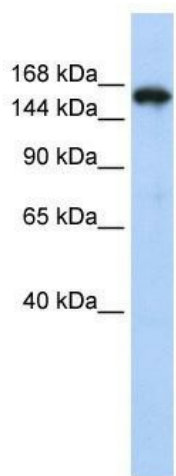
Protein Families: Druggable Genome, Phosphatase

Protein Pathways: Inositol phosphate metabolism, Metabolic pathways, Phosphatidylinositol signaling system

Product images:



SYNJ1 antibody - N-terminal region validated by WB using human LCL at 1: 1000.



WB Suggested Anti-SYNJ1 Antibody Titration: 0.2-1 ug/ml; ELISA Titer: 1: 62500; Positive Control: HepG2 cell lysate