

## Product datasheet for **TA345855**

### eIF4GII (EIF4G3) Rabbit Polyclonal Antibody

#### Product data:

Product Type:	Primary Antibodies
Applications:	WB
Recommended Dilution:	WB
Reactivity:	Human
Host:	Rabbit
Isotype:	IgG
Clonality:	Polyclonal
Immunogen:	The immunogen for anti-EIF4G3 antibody: synthetic peptide directed towards the middle region of human EIF4G3. Synthetic peptide located within the following region: MRGGSSKDLLDNQSQEEQRREMLETVKQLTGGVDVERNSTEAERNKTRES
Formulation:	Liquid. Purified antibody supplied in 1x PBS buffer with 0.09% (w/v) sodium azide and 2% sucrose. <i>Note that this product is shipped as lyophilized powder to China customers.</i>
Purification:	Affinity Purified
Conjugation:	Unconjugated
Storage:	Store at -20°C as received.
Stability:	Stable for 12 months from date of receipt.
Predicted Protein Size:	174 kDa
Gene Name:	eukaryotic translation initiation factor 4 gamma 3
Database Link:	<a href="#">NP_003751</a> <a href="#">Entrez Gene 8672 Human</a> <a href="#">O43432</a>
Background:	EIF4G3 is probable component of the protein complex eIF4F, which is involved in the recognition of the mRNA cap, ATP-dependent unwinding of 5'-terminal secondary structure and recruitment of mRNA to the ribosome. It is thought to be a functional homolog of EIF4G1.
Synonyms:	eIF-4G 3; eIF4G 3; eIF4GII



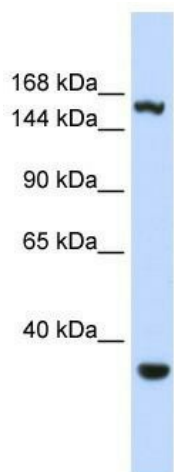
[View online »](#)

**Note:** Immunogen Sequence Homology: Dog: 100%; Pig: 100%; Rat: 100%; Horse: 100%; Human: 100%; Mouse: 100%; Bovine: 100%; Rabbit: 100%; Guinea pig: 100%

**Protein Families:** Transcription Factors

**Protein Pathways:** Viral myocarditis

### Product images:



WB Suggested Anti-EIF4G3 Antibody Titration: 0.2-1 ug/ml; ELISA Titer: 1: 1562500; Positive Control: HeLa cell lysate; EIF4G3 is supported by BioGPS gene expression data to be expressed in HeLa