

Product datasheet for **TA345830**

SNRPN Rabbit Polyclonal Antibody

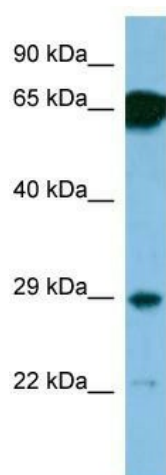
Product data:

Product Type:	Primary Antibodies
Applications:	WB
Recommended Dilution:	WB
Reactivity:	Human
Host:	Rabbit
Isotype:	IgG
Clonality:	Polyclonal
Immunogen:	The immunogen for anti-SNRPN antibody: synthetic peptide directed towards the N terminal of human SNRPN. Synthetic peptide located within the following region: DEFRKIKPKNAKQPEREEKRVLGLVLLRGENLVSMTEGPPPKDTGIARV
Formulation:	Liquid. Purified antibody supplied in 1x PBS buffer with 0.09% (w/v) sodium azide and 2% sucrose. <i>Note that this product is shipped as lyophilized powder to China customers.</i>
Purification:	Affinity Purified
Conjugation:	Unconjugated
Storage:	Store at -20°C as received.
Stability:	Stable for 12 months from date of receipt.
Predicted Protein Size:	24 kDa
Gene Name:	small nuclear ribonucleoprotein polypeptide N
Database Link:	NP_003088 Entrez Gene 6638 Human P63162



[View online »](#)

Background:	The protein encoded by this gene is one polypeptide of a small nuclear ribonucleoprotein complex and belongs to the snRNP SMB/SMN family. The protein plays a role in pre-mRNA processing, possibly tissue-specific alternative splicing events. Although individual snRNPs are believed to recognize specific nucleic acid sequences through RNA-RNA base pairing, the specific role of this family member is unknown. The protein arises from a bicistronic transcript that also encodes a protein identified as the SNRPN upstream reading frame (SNURF).
Synonyms:	HCERN3; PWCR; PWS; RT-LI; SM-D; sm-N; SMN; SNRNP-N; SNURF-SNRPN
Note:	Immunogen Sequence Homology: Dog: 100%; Pig: 100%; Rat: 100%; Horse: 100%; Human: 100%; Mouse: 100%; Bovine: 100%; Rabbit: 100%; Guinea pig: 100%; Zebrafish: 93%
Protein Families:	Stem cell - Pluripotency

Product images:

WB Suggested Anti-SNRPN Antibody; Titration:
1.0 ug/ml; Positive Control: THP-1 Whole Cell