

Product datasheet for **TA345805**

NIPP1 (PPP1R8) Rabbit Polyclonal Antibody

Product data:

Product Type:	Primary Antibodies
Applications:	WB
Recommended Dilution:	WB
Reactivity:	Human
Host:	Rabbit
Isotype:	IgG
Clonality:	Polyclonal
Immunogen:	The immunogen for anti-PPP1R8 antibody: synthetic peptide directed towards the middle region of human PPP1R8. Synthetic peptide located within the following region: VDPSVGRFRNMVQTAVVPVKKRVEGPGSLGLEESGSRMNFASFSGGLY
Formulation:	Liquid. Purified antibody supplied in 1x PBS buffer with 0.09% (w/v) sodium azide and 2% sucrose. <i>Note that this product is shipped as lyophilized powder to China customers.</i>
Purification:	Affinity Purified
Conjugation:	Unconjugated
Storage:	Store at -20°C as received.
Stability:	Stable for 12 months from date of receipt.
Predicted Protein Size:	38 kDa
Gene Name:	protein phosphatase 1 regulatory subunit 8
Database Link:	NP_054829 Entrez Gene 5511 Human Q12972
Background:	This gene, through alternative splicing, encodes three different isoforms. Two of the protein isoforms encoded by this gene are specific inhibitors of type 1 serine/threonine protein phosphatases and can bind but not cleave RNA. The third protein isoform lacks the phosphatase inhibitory function but is a single-strand endoribonuclease comparable to RNase E of E. coli. This isoform requires magnesium for its function and cleaves specific sites in A+U-rich regions of RNA.



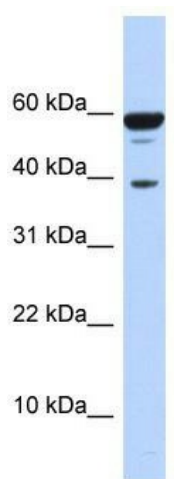
[View online »](#)

Synonyms: ARD-1; ARD1; NIPP-1; NIPP1; PRO2047

Note: Immunogen Sequence Homology: Dog: 100%; Pig: 100%; Rat: 100%; Horse: 100%; Human: 100%; Bovine: 100%; Rabbit: 93%; Guinea pig: 93%; Mouse: 86%

Protein Families: Druggable Genome, Transcription Factors

Product images:



WB Suggested Anti-PPP1R8 Antibody Titration:
0.2-1 ug/ml; ELISA Titer: 1: 62500; Positive
Control: 293T cell lysate PPP1R8 is supported by
BioGPS gene expression data to be expressed in
HEK293T