

Product datasheet for **TA345641**

EVX2 Rabbit Polyclonal Antibody

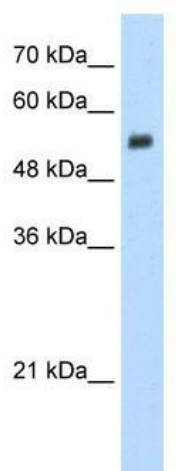
Product data:

Product Type:	Primary Antibodies
Applications:	WB
Recommended Dilution:	WB
Reactivity:	Human
Host:	Rabbit
Isotype:	IgG
Clonality:	Polyclonal
Immunogen:	The immunogen for anti-EVX2 antibody: synthetic peptide directed towards the N terminal of human LOC344191. Synthetic peptide located within the following region: MMERIRKEMILMERGLHSPTAGKRFSNLSNSAGNAVLEALENSQHPARLS
Formulation:	Liquid. Purified antibody supplied in 1x PBS buffer with 0.09% (w/v) sodium azide and 2% sucrose. <i>Note that this product is shipped as lyophilized powder to China customers.</i>
Purification:	Protein A purified
Conjugation:	Unconjugated
Storage:	Store at -20°C as received.
Stability:	Stable for 12 months from date of receipt.
Predicted Protein Size:	52 kDa
Gene Name:	even-skipped homeobox 2
Database Link:	NP_001073927 Entrez Gene 344191 Human Q03828
Background:	LOC344191 is a new candidate transcription factor.
Synonyms:	EVX-2
Note:	Immunogen Sequence Homology: Human: 100%; Dog: 93%; Pig: 93%; Rat: 93%; Horse: 93%; Guinea pig: 93%; Mouse: 86%



[View online »](#)

Product images:



WB Suggested Anti-EVX2 Antibody Titration: 1.25 ug/ml; Positive Control: Jurkat cell lysate