

## Product datasheet for **TA345619**

### DMRT2 Rabbit Polyclonal Antibody

#### Product data:

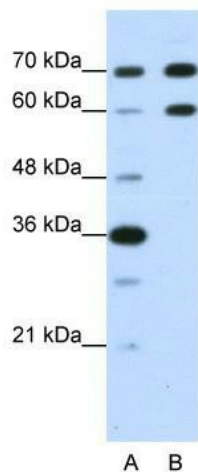
Product Type:	Primary Antibodies
Applications:	IHC, WB
Recommended Dilution:	WB, IHC
Reactivity:	Human
Host:	Rabbit
Isotype:	IgG
Clonality:	Polyclonal
Immunogen:	The immunogen for anti-DMRT2 antibody: synthetic peptide directed towards the N terminal of human DMRT2. Synthetic peptide located within the following region: DPQAGSAAGDWEIDVESLELEEDVCGAPRSTPPGSPPPADGDCEDEDD
Formulation:	Liquid. Purified antibody supplied in 1x PBS buffer with 0.09% (w/v) sodium azide and 2% sucrose. <i>Note that this product is shipped as lyophilized powder to China customers.</i>
Purification:	Protein A purified
Conjugation:	Unconjugated
Storage:	Store at -20°C as received.
Stability:	Stable for 12 months from date of receipt.
Predicted Protein Size:	62 kDa
Gene Name:	doublesex and mab-3 related transcription factor 2
Database Link:	<a href="#">NP_870987</a> <a href="#">Entrez Gene 10655 Human</a> <a href="#">Q9Y5R5</a>
Background:	Gonadal dysgenesis in 9p-deleted individuals might be due to combined hemizygosity of DMRT1 and DMRT2.
Synonyms:	doublesex and mab-3 related transcription factor 2; OTTHUMP00000020964; OTTHUMP00000020965; OTTHUMP00000020966; OTTHUMP00000020967; terra-like protein
Note:	Immunogen Sequence Homology: Human: 100%; Rabbit: 86%



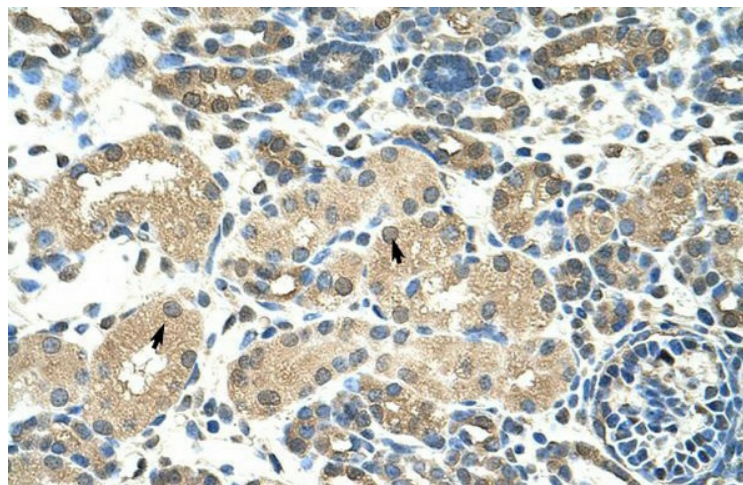
[View online »](#)

Protein Families: Transcription Factors, Transmembrane

Product images:



WB Suggested Anti-DMRT2 Antibody Titration: 1.25 ug/ml; Positive Control: HepG2 cell lysate



Human kidney