

Product datasheet for **TA345167**

JMJD6 Rabbit Polyclonal Antibody

Product data:

Product Type:	Primary Antibodies
Applications:	WB
Recommended Dilution:	WB
Reactivity:	Human
Host:	Rabbit
Isotype:	IgG
Clonality:	Polyclonal
Immunogen:	The immunogen for anti-PTDSR antibody: synthetic peptide directed towards the C terminal of human PTDSR. Synthetic peptide located within the following region: VVWHKTVRGRPKLSRKWYRILKQEHPELAVLADSVLDLQESTGIASDSSSD
Formulation:	Liquid. Purified antibody supplied in 1x PBS buffer with 0.09% (w/v) sodium azide and 2% sucrose. <i>Note that this product is shipped as lyophilized powder to China customers.</i>
Purification:	Protein A purified
Conjugation:	Unconjugated
Storage:	Store at -20°C as received.
Stability:	Stable for 12 months from date of receipt.
Predicted Protein Size:	43 kDa
Gene Name:	arginine demethylase and lysine hydroxylase
Database Link:	NP_055982 Entrez Gene 23210 Human Q6NYC1
Background:	PTDSR is required during embryogenesis and differentiation of multiple organs during embryogenesis. PTDSR probably acts as a key regulator of hematopoietic differentiation. PTDSR may not be required for apoptotic cell clearance by macrophages but seems to be necessary for the regulation of macrophage cytokine responses
Synonyms:	PSR; PTDSR; PTDSR1

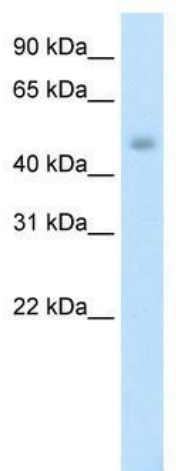


[View online »](#)

Note: Immunogen Sequence Homology: Dog: 100%; Pig: 100%; Horse: 100%; Human: 100%; Bovine: 100%; Rat: 93%; Mouse: 93%; Rabbit: 93%; Zebrafish: 93%; Guinea pig: 93%

Protein Families: Druggable Genome, ES Cell Differentiation/IPS

Product images:



WB Suggested Anti-PTDSR Antibody Titration:
1.25 ug/ml; ELISA Titer: 1: 1562500; Positive
Control: Human Thymus