

Product datasheet for **TA345117**

PPP2R1A Rabbit Polyclonal Antibody

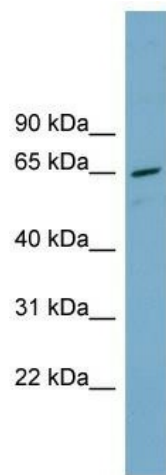
Product data:

Product Type:	Primary Antibodies
Applications:	WB
Recommended Dilution:	WB
Reactivity:	Human, Mouse
Host:	Rabbit
Isotype:	IgG
Clonality:	Polyclonal
Immunogen:	The immunogen for anti-PPP2R1A antibody: synthetic peptide directed towards the middle region of human PPP2R1A. Synthetic peptide located within the following region: NVAKSLQKIGPILDNSTLQSEVKPILEKLTQDQDQVDVKYFAQEALTVLSL
Formulation:	Liquid. Purified antibody supplied in 1x PBS buffer with 0.09% (w/v) sodium azide and 2% sucrose. <i>Note that this product is shipped as lyophilized powder to China customers.</i>
Purification:	Affinity Purified
Conjugation:	Unconjugated
Storage:	Store at -20°C as received.
Stability:	Stable for 12 months from date of receipt.
Predicted Protein Size:	65 kDa
Gene Name:	protein phosphatase 2 scaffold subunit Aalpha
Database Link:	NP_055040 Entrez Gene 51792 Mouse Entrez Gene 5518 Human P30153



[View online »](#)

Background:	This gene encodes a constant regulatory subunit of protein phosphatase 2. Protein phosphatase 2 is one of the four major Ser/Thr phosphatases, and it is implicated in the negative control of cell growth and division. It consists of a common heteromeric core enzyme, which is composed of a catalytic subunit and a constant regulatory subunit, that associates with a variety of regulatory subunits. The constant regulatory subunit A serves as a scaffolding molecule to coordinate the assembly of the catalytic subunit and a variable regulatory B subunit. This gene encodes an alpha isoform of the constant regulatory subunit A. Alternatively spliced transcript variants have been described. [provided by RefSeq, Apr 2010]
Synonyms:	PP2A-Aalpha; PP2AAALPHA; PR65A
Note:	Immunogen Sequence Homology: Dog: 100%; Pig: 100%; Rat: 100%; Horse: 100%; Human: 100%; Mouse: 100%; Bovine: 100%; Rabbit: 100%; Guinea pig: 100%
Protein Families:	Druggable Genome, Phosphatase, Transcription Factors
Protein Pathways:	Long-term depression, Oocyte meiosis, TGF-beta signaling pathway, Tight junction, Wnt signaling pathway

Product images:

WB Suggested Anti-PPP2R1A Antibody Titration:
0.2-1 ug/ml; ELISA Titer: 1:1562500; Positive
Control: THP-1 cell lysate