

Product datasheet for **TA344958**

NALP2 (NLRP2) Rabbit Polyclonal Antibody

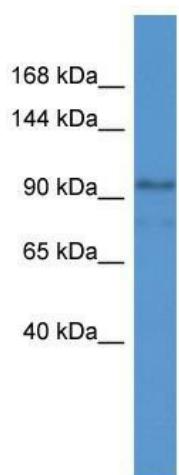
Product data:

Product Type:	Primary Antibodies
Applications:	WB
Recommended Dilution:	WB
Reactivity:	Human
Host:	Rabbit
Isotype:	IgG
Clonality:	Polyclonal
Immunogen:	The immunogen for anti-NLRP2 antibody: synthetic peptide directed towards the C terminal of human NLRP2. Synthetic peptide located within the following region: FETLTCSGTLRLRLKIDDFNDELNKLLEEIEEKNPQLIIDTEKHPWA
Formulation:	Liquid. Purified antibody supplied in 1x PBS buffer with 0.09% (w/v) sodium azide and 2% sucrose. <i>Note that this product is shipped as lyophilized powder to China customers.</i>
Purification:	Affinity Purified
Conjugation:	Unconjugated
Storage:	Store at -20°C as received.
Stability:	Stable for 12 months from date of receipt.
Predicted Protein Size:	120 kDa
Gene Name:	NLR family, pyrin domain containing 2
Database Link:	NP_060322 Entrez Gene 55655 Human Q9NX02
Background:	NALP proteins, such as NALP2, are characterized by an N-terminal pyrin (MIM 608107) domain (PYD) and are involved in the activation of caspase-1 (CASP1; MIM 147678) by Toll-like receptors (see TLR4; MIM 603030). They may also be involved in protein complexes that activate proinflammatory caspases (Tschopp et al., 2003 [PubMed 12563287]).
Synonyms:	CLR19.9; NALP2; NBS1; PAN1; PYPAF2
Note:	Immunogen Sequence Homology: Human: 100%



[View online »](#)

Product images:



WB Suggested Anti-NLRP2 Antibody Titration: 0.2-1 ug/ml; ELISA Titer: 1:1562500; Positive Control: COLO205 cell lysate