

## Product datasheet for **TA344946**

### VPS37C Rabbit Polyclonal Antibody

#### Product data:

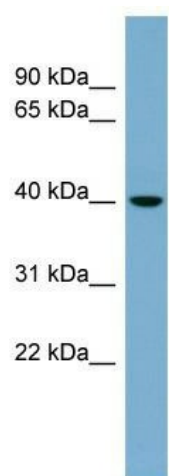
Product Type:	Primary Antibodies
Applications:	WB
Recommended Dilution:	WB
Reactivity:	Human
Host:	Rabbit
Isotype:	IgG
Clonality:	Polyclonal
Immunogen:	The immunogen for anti-VPS37C antibody: synthetic peptide directed towards the N terminal of human VPS37C. Synthetic peptide located within the following region: LQLEREMALATNRS LAERNLEFQGPLEISRSNLSDRYQELRKLVERCQEQ
Formulation:	Liquid. Purified antibody supplied in 1x PBS buffer with 0.09% (w/v) sodium azide and 2% sucrose. <i>Note that this product is shipped as lyophilized powder to China customers.</i>
Purification:	Affinity Purified
Conjugation:	Unconjugated
Storage:	Store at -20°C as received.
Stability:	Stable for 12 months from date of receipt.
Predicted Protein Size:	39 kDa
Gene Name:	VPS37C, ESCRT-I subunit
Database Link:	<a href="#">NP_060436</a> <a href="#">Entrez Gene 55048 Human</a> <a href="#">A5D8V6</a>
Background:	VPS37C is a subunit of ESCRT-I (endosomal sorting complex required for transport I), a complex in the class E vacuolar protein sorting (VPS) pathway required for sorting ubiquitinated transmembrane proteins into internal vesicles of multivesicular bodies
Synonyms:	FLJ20847
Note:	Immunogen Sequence Homology: Dog: 100%; Pig: 100%; Rat: 100%; Horse: 100%; Human: 100%; Mouse: 100%; Bovine: 100%; Rabbit: 100%; Guinea pig: 93%



[View online »](#)

Protein Pathways: Endocytosis

### Product images:



WB Suggested Anti-VPS37C Antibody Titration:  
0.2-1 ug/ml; Positive Control: Human Muscle