

## Product datasheet for **TA344935**

### NODAL Rabbit Polyclonal Antibody

#### Product data:

Product Type:	Primary Antibodies
Applications:	WB
Recommended Dilution:	WB
Reactivity:	Human, Mouse
Host:	Rabbit
Isotype:	IgG
Clonality:	Polyclonal
Immunogen:	The immunogen for anti-NODAL antibody: synthetic peptide directed towards the N terminal of human NODAL. Synthetic peptide located within the following region: PSSPSPLAYMLSLYRDPLPRADIIRSLQAEDVAVDGQNWTFADFSLSQ
Formulation:	Liquid. Purified antibody supplied in 1x PBS buffer with 0.09% (w/v) sodium azide and 2% sucrose. <i>Note that this product is shipped as lyophilized powder to China customers.</i>
Purification:	Affinity Purified
Conjugation:	Unconjugated
Storage:	Store at -20°C as received.
Stability:	Stable for 12 months from date of receipt.
Predicted Protein Size:	37 kDa
Gene Name:	nodal growth differentiation factor
Database Link:	<a href="#">NP_060525</a> <a href="#">Entrez Gene 18119 Mouse</a> <a href="#">Entrez Gene 4838 Human</a> <a href="#">Q96S42</a>
Background:	The protein encoded by this gene is a member of the TGF-beta superfamily. Studies of the mouse counterpart suggested that this gene may be essential for mesoderm formation and subsequent organization of axial structures in early embryonic development.
Synonyms:	HTX5
Note:	Immunogen Sequence Homology: Dog: 100%; Pig: 100%; Rat: 100%; Horse: 100%; Human: 100%; Mouse: 100%; Rabbit: 100%; Guinea pig: 100%; Bovine: 93%

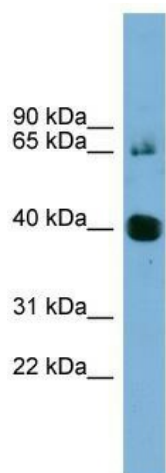


[View online »](#)

**Protein Families:** Cancer stem cells, Druggable Genome, Embryonic stem cells, ES Cell Differentiation/IPS, Induced pluripotent stem cells, Secreted Protein, Stem cell relevant signaling - TGFb/BMP signaling pathway

**Protein Pathways:** TGF-beta signaling pathway

**Product images:**



WB Suggested Anti-NODAL Antibody Titration:  
0.2-1 ug/ml; ELISA Titer: 1:1562500; Positive  
Control: Human Thymus