

Product datasheet for **TA344893**

OGDHL Rabbit Polyclonal Antibody

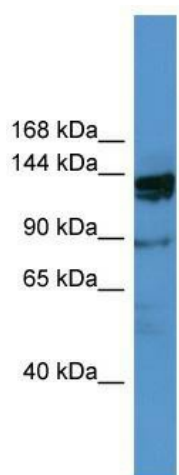
Product data:

Product Type:	Primary Antibodies
Applications:	WB
Recommended Dilution:	WB
Reactivity:	Human
Host:	Rabbit
Isotype:	IgG
Clonality:	Polyclonal
Immunogen:	The immunogen for anti-OGDHL antibody: synthetic peptide directed towards the N terminal of human OGDHL. Synthetic peptide located within the following region: VFGWRSRSSGPPATFPSSKGGGGSSYMEEMYFAWLENPQSVHKSWDSFFR
Formulation:	Liquid. Purified antibody supplied in 1x PBS buffer with 0.09% (w/v) sodium azide and 2% sucrose. <i>Note that this product is shipped as lyophilized powder to China customers.</i>
Purification:	Affinity Purified
Conjugation:	Unconjugated
Storage:	Store at -20°C as received.
Stability:	Stable for 12 months from date of receipt.
Predicted Protein Size:	114 kDa
Gene Name:	oxoglutarate dehydrogenase-like
Database Link:	NP_060715 Entrez Gene 55753 Human Q9ULD0
Background:	The function of OGDHL remains unknown.
Synonyms:	FLJ10851
Note:	Immunogen Sequence Homology: Dog: 100%; Pig: 100%; Human: 100%; Horse: 92%; Rat: 85%; Bovine: 85%
Protein Pathways:	Citrate cycle (TCA cycle), Lysine degradation, Metabolic pathways, Tryptophan metabolism



[View online »](#)

Product images:



WB Suggested Anti-OGDHL Antibody Titration:
0.2-1 ug/ml; ELISA Titer: 1:1562500; Positive
Control: COLO205 cell lysate