

Product datasheet for **TA344799**

ADPRM Rabbit Polyclonal Antibody

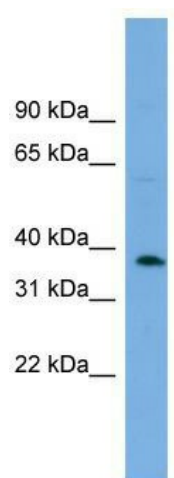
Product data:

| | |
|-------------------------|---|
| Product Type: | Primary Antibodies |
| Applications: | WB |
| Recommended Dilution: | WB |
| Reactivity: | Human |
| Host: | Rabbit |
| Isotype: | IgG |
| Clonality: | Polyclonal |
| Immunogen: | The immunogen for anti-C17orf48 antibody: synthetic peptide directed towards the middle region of human C17orf48. Synthetic peptide located within the following region: KYEQCMKILREHNPNTLNSPQGLSEPQFVQFNGGFSQEQLNWLNEVLTF |
| Formulation: | Liquid. Purified antibody supplied in 1x PBS buffer with 0.09% (w/v) sodium azide and 2% sucrose. <i>Note that this product is shipped as lyophilized powder to China customers.</i> |
| Purification: | Affinity Purified |
| Conjugation: | Unconjugated |
| Storage: | Store at -20°C as received. |
| Stability: | Stable for 12 months from date of receipt. |
| Predicted Protein Size: | 39 kDa |
| Gene Name: | ADP-ribose/CDP-alcohol diphosphatase, manganese dependent |
| Database Link: | NP_064618 Entrez Gene 56985 Human Q3LIE5 |
| Background: | The function of this protein remains unknown. |
| Synonyms: | C17orf48; MDS006; NBLA03831 |
| Note: | Immunogen Sequence Homology: Horse: 100%; Human: 100%; Bovine: 100%; Dog: 93%; Pig: 93%; Rat: 93%; Mouse: 93%; Rabbit: 93%; Guinea pig: 86% |



[View online »](#)

Product images:



WB Suggested Anti-C17orf48 Antibody Titration:
0.2-1 ug/ml; ELISA Titer: 1:312500; Positive
Control: NCI-H226 cell lysate ADPRM is supported
by BioGPS gene expression data to be expressed
in NCIH226