

## Product datasheet for **TA344758**

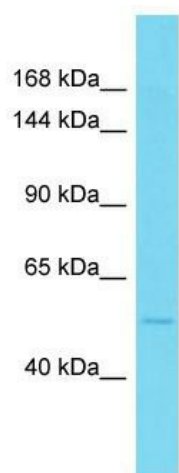
### KIF17 Rabbit Polyclonal Antibody

#### Product data:

Product Type:	Primary Antibodies
Applications:	WB
Recommended Dilution:	WB
Reactivity:	Mouse
Host:	Rabbit
Isotype:	IgG
Clonality:	Polyclonal
Immunogen:	The immunogen for Anti-Kif17 antibody is: synthetic peptide directed towards the middle region of Mouse Kif17. Synthetic peptide located within the following region: TGWKNRAVGTYLMNKDSSRSHSIFTINIEIYAVDERGKDHLRAGKLNLDV
Formulation:	Liquid. Purified antibody supplied in 1x PBS buffer with 0.09% (w/v) sodium azide and 2% sucrose. <i>Note that this product is shipped as lyophilized powder to China customers.</i>
Purification:	Affinity Purified
Conjugation:	Unconjugated
Storage:	Store at -20°C as received.
Stability:	Stable for 12 months from date of receipt.
Predicted Protein Size:	56 kDa
Gene Name:	kinesin family member 17
Database Link:	<a href="#">NP_065867</a> <a href="#">Entrez Gene 16559 Mouse Q9P2E2</a>
Background:	The function of this protein remains unknown.
Synonyms:	KIF3X; KIF17B; KLP-2; OSM-3
Note:	Immunogen Sequence Homology: Dog: 100%; Pig: 100%; Rat: 100%; Horse: 100%; Human: 100%; Mouse: 100%; Bovine: 100%; Rabbit: 100%; Guinea pig: 100%
Protein Families:	Druggable Genome



[View online »](#)

**Product images:**

Host: Rabbit

Target Name: Kif17

Sample Tissue: Mouse Stomach Lysate

Antibody Dilution: 1.0 $\mu$ g/ml

Host: Rabbit; Target Name: Kif17; Sample Tissue: Mouse Stomach lysates; Antibody Dilution: 1.0 ug/ml