

Product datasheet for **TA344738**

PPP3CB Rabbit Polyclonal Antibody

Product data:

Product Type:	Primary Antibodies
Applications:	WB
Recommended Dilution:	WB
Reactivity:	Rat
Host:	Rabbit
Isotype:	IgG
Clonality:	Polyclonal
Immunogen:	The immunogen for Anti-Ppp3cb antibody is: synthetic peptide directed towards the middle region of Rat Ppp3cb. Synthetic peptide located within the following region: MCDLLWSDPSEDFGNEKSQEHFSHNTVRGCSYFYNYPAVCEFLQNNLLS
Formulation:	Liquid. Purified antibody supplied in 1x PBS buffer with 0.09% (w/v) sodium azide and 2% sucrose. <i>Note that this product is shipped as lyophilized powder to China customers.</i>
Purification:	Affinity Purified
Conjugation:	Unconjugated
Storage:	Store at -20°C as received.
Stability:	Stable for 12 months from date of receipt.
Predicted Protein Size:	57 kDa
Gene Name:	protein phosphatase 3 catalytic subunit beta
Database Link:	NP_001135825 Entrez Gene 24675 Rat P16298
Background:	Ppp3cb is a Calcium-dependent, calmodulin-stimulated protein phosphatase. This subunit may have a role in the calmodulin activation of calcineurin.
Synonyms:	CALNA2; CALNB; CNA2; PP2Bbeta
Note:	Immunogen Sequence Homology: Dog: 100%; Pig: 100%; Rat: 100%; Horse: 100%; Human: 100%; Mouse: 100%; Bovine: 100%; Rabbit: 100%; Guinea pig: 100%; Zebrafish: 93%

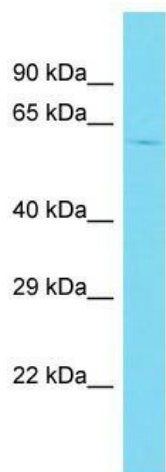


[View online »](#)

Protein Families: Druggable Genome, Phosphatase, Transcription Factors

Protein Pathways: Alzheimer's disease, Amyotrophic lateral sclerosis (ALS), Apoptosis, Axon guidance, B cell receptor signaling pathway, Calcium signaling pathway, Long-term potentiation, MAPK signaling pathway, Natural killer cell mediated cytotoxicity, Oocyte meiosis, T cell receptor signaling pathway, VEGF signaling pathway, Wnt signaling pathway

Product images:



Host: Rabbit; Target Name: Ppp3cb; Sample Tissue: Rat Small Intestine lysates; Antibody Dilution: 1.0 ug/ml