

Product datasheet for **TA344686**

TINAGL1 Rabbit Polyclonal Antibody

Product data:

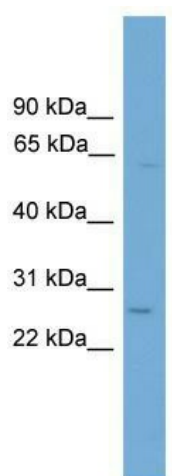
Product Type:	Primary Antibodies
Applications:	WB
Recommended Dilution:	WB
Reactivity:	Human
Host:	Rabbit
Isotype:	IgG
Clonality:	Polyclonal
Immunogen:	The immunogen for anti-TINAGL1 antibody: synthetic peptide directed towards the middle region of human TINAGL1. Synthetic peptide located within the following region: ENGPVQALMEVHEDFFLYKGGIYSHTPVSLGRPERYRRHGHGTHSVKITGWG
Formulation:	Liquid. Purified antibody supplied in 1x PBS buffer with 0.09% (w/v) sodium azide and 2% sucrose. <i>Note that this product is shipped as lyophilized powder to China customers.</i>
Purification:	Affinity Purified
Conjugation:	Unconjugated
Storage:	Store at -20°C as received.
Stability:	Stable for 12 months from date of receipt.
Predicted Protein Size:	52 kDa
Gene Name:	tubulointerstitial nephritis antigen like 1
Database Link:	NP_071447 Entrez Gene 64129 Human Q9GZM7
Background:	TINAGL1 may be implicated in the adrenocortical zonation and in mechanisms for repressing the CYP11B1 gene expression in adrenocortical cells. This is a non catalytic peptidase C1 family protein.
Synonyms:	ARG1; LCN7; LIECG3; TINAGRP
Note:	Immunogen Sequence Homology: Pig: 100%; Human: 100%; Guinea pig: 100%; Dog: 93%; Rabbit: 93%; Rat: 92%; Horse: 86%; Mouse: 86%; Bovine: 86%



[View online »](#)

Protein Families: Druggable Genome, Protease, Secreted Protein

Product images:



WB Suggested Anti-TINAGL1 Antibody Titration:
0.2-1 ug/ml; Positive Control: HeLa cell lysate