

Product datasheet for **TA344603**

ORC4L (ORC4) Rabbit Polyclonal Antibody

Product data:

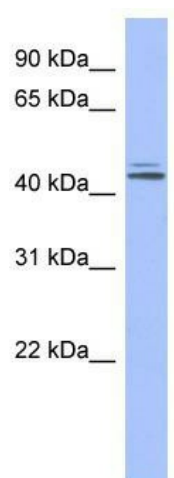
Product Type:	Primary Antibodies
Applications:	WB
Recommended Dilution:	WB
Reactivity:	Human
Host:	Rabbit
Isotype:	IgG
Clonality:	Polyclonal
Immunogen:	The immunogen for anti-ORC4L antibody: synthetic peptide directed towards the middle region of human ORC4L. Synthetic peptide located within the following region: VLEICLIAMKHLNDIYEEEPFNFQMVYNEFQKFKVQRKAHSVYNFEKPVV
Formulation:	Liquid. Purified antibody supplied in 1x PBS buffer with 0.09% (w/v) sodium azide and 2% sucrose. <i>Note that this product is shipped as lyophilized powder to China customers.</i>
Purification:	Affinity Purified
Conjugation:	Unconjugated
Storage:	Store at -20°C as received.
Stability:	Stable for 12 months from date of receipt.
Predicted Protein Size:	50 kDa
Gene Name:	origin recognition complex subunit 4
Database Link:	NP_859525 Entrez Gene 5000 Human O43929
Background:	The origin recognition complex (ORC) is a highly conserved six subunit protein complex essential for the initiation of the DNA replication in eukaryotic cells. Studies in yeast demonstrated that ORC binds specifically to origins of replication and serves
Synonyms:	ORC4L; ORC4P
Note:	Immunogen Sequence Homology: Dog: 100%; Pig: 100%; Rat: 100%; Horse: 100%; Human: 100%; Mouse: 100%; Bovine: 100%; Rabbit: 100%; Guinea pig: 100%; Zebrafish: 79%



[View online »](#)

Protein Pathways: Cell cycle

Product images:



WB Suggested Anti-ORC4L Antibody Titration: 0.2-1 ug/ml; ELISA Titer: 1:1562500; Positive Control: Human Liver