

Product datasheet for **TA344596**

RAC1 Rabbit Polyclonal Antibody

Product data:

Product Type:	Primary Antibodies
Applications:	WB
Recommended Dilution:	WB
Reactivity:	Human
Host:	Rabbit
Isotype:	IgG
Clonality:	Polyclonal
Immunogen:	The immunogen for anti-RAC1 antibody: synthetic peptide directed towards the middle region of human RAC1. Synthetic peptide located within the following region: LAMAKEIGAVKYLECSALTQRGLKTVFDEAIRAVLCPPPVKKRKRKCLLL
Formulation:	Liquid. Purified antibody supplied in 1x PBS buffer with 0.09% (w/v) sodium azide and 2% sucrose. <i>Note that this product is shipped as lyophilized powder to China customers.</i>
Purification:	Affinity Purified
Conjugation:	Unconjugated
Storage:	Store at -20°C as received.
Stability:	Stable for 12 months from date of receipt.
Predicted Protein Size:	21 kDa
Gene Name:	ras-related C3 botulinum toxin substrate 1 (rho family, small GTP binding protein Rac1)
Database Link:	NP_008839 Entrez Gene 5879 Human P63000
Background:	The protein encoded by this gene is a GTPase which belongs to the RAS superfamily of small GTP-binding proteins. Members of this superfamily appear to regulate a diverse array of cellular events, including the control of cell growth, cytoskeletal reorganization, and the activation of protein kinases. Two transcript variants encoding different isoforms have been found for this gene.
Synonyms:	MIG5; p21-Rac1; Rac-1; TC-25



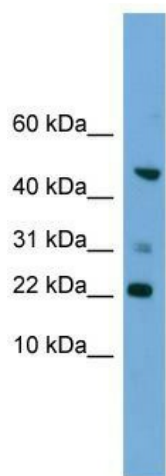
[View online »](#)

Note: Immunogen Sequence Homology: Dog: 100%; Pig: 100%; Rat: 100%; Horse: 100%; Human: 100%; Mouse: 100%; Sheep: 100%; Bovine: 100%; Rabbit: 100%; Zebrafish: 100%; Guinea pig: 100%

Protein Families: Druggable Genome

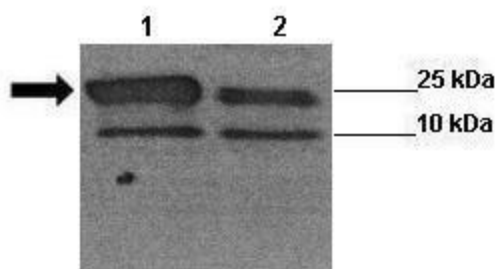
Protein Pathways: Adherens junction, Amyotrophic lateral sclerosis (ALS), Axon guidance, B cell receptor signaling pathway, Chemokine signaling pathway, Colorectal cancer, Epithelial cell signaling in Helicobacter pylori infection, Fc epsilon RI signaling pathway, Fc gamma R-mediated phagocytosis, Focal adhesion, Leukocyte transendothelial migration, MAPK signaling pathway, Natural killer cell mediated cytotoxicity, Neurotrophin signaling pathway, Pancreatic cancer, Pathways in cancer, Regulation of actin cytoskeleton, Renal cell carcinoma, Toll-like receptor signaling pathway, VEGF signaling pathway, Viral myocarditis, Wnt signaling pathway

Product images:



WB Suggested Anti-RAC1 Antibody Titration: 0.2-1 ug/ml; Positive Control: HepG2 cell lysate

RAC1



Sample Type : Lane 1: 20ug siRUVBL1 transfected human H1299 cells Lane 2: 20ug untransfected human H1299 cells Primary Antibody Dilution : 1:1000 Secondary Antibody: Anti-rabbit-HRP Secondary Antibody Dilution: 1:3000 Color/Signal Descriptions: RAC1 Gene