

## Product datasheet for **TA344534**

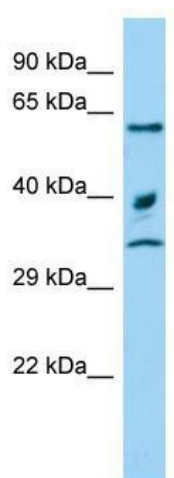
### ARIH2 Rabbit Polyclonal Antibody

#### Product data:

Product Type:	Primary Antibodies
Applications:	WB
Recommended Dilution:	WB
Reactivity:	Rat, Human
Host:	Rabbit
Isotype:	IgG
Clonality:	Polyclonal
Immunogen:	The immunogen for Anti-Arih2 antibody is: synthetic peptide directed towards the C-terminal region of Rat Arih2. Synthetic peptide located within the following region: YIMESGPRKKLFEYQQAQLEAEIENLSWKVERADSYDRGDLENQMHIAEQ
Formulation:	Liquid. Purified antibody supplied in 1x PBS buffer with 0.09% (w/v) sodium azide and 2% sucrose. <i>Note that this product is shipped as lyophilized powder to China customers.</i>
Purification:	Affinity Purified
Conjugation:	Unconjugated
Storage:	Store at -20°C as received.
Stability:	Stable for 12 months from date of receipt.
Predicted Protein Size:	54 kDa
Gene Name:	ariadne RBR E3 ubiquitin protein ligase 2
Database Link:	<a href="#">NP_006312</a> <a href="#">Entrez Gene 316005 RatEntrez Gene 10425 Human O95376</a>
Background:	The function of this protein remains unknown.
Synonyms:	ARI2; TRIAD1
Note:	Immunogen Sequence Homology: Dog: 100%; Pig: 100%; Rat: 100%; Horse: 100%; Human: 100%; Mouse: 100%; Bovine: 100%; Rabbit: 100%; Guinea pig: 100%
Protein Families:	Druggable Genome



[View online »](#)

**Product images:**

Host: Rabbit; Target Name: Arih2; Sample Tissue: Rat Testis lysates; Antibody Dilution: 1.0 ug/ml