

Product datasheet for **TA344460**

WNT8B Rabbit Polyclonal Antibody

Product data:

Product Type:	Primary Antibodies
Applications:	WB
Recommended Dilution:	WB
Reactivity:	Mouse
Host:	Rabbit
Isotype:	IgG
Clonality:	Polyclonal
Immunogen:	The immunogen for Anti-Wnt8b antibody is: synthetic peptide directed towards the C-terminal region of Mouse Wnt8b. Synthetic peptide located within the following region: SISTRELVHLEDSPDYCLNKTLLGTEGRECLRRGRALGRWERRSCRR
Formulation:	Liquid. Purified antibody supplied in 1x PBS buffer with 0.09% (w/v) sodium azide and 2% sucrose. <i>Note that this product is shipped as lyophilized powder to China customers.</i>
Purification:	Affinity Purified
Conjugation:	Unconjugated
Storage:	Store at -20°C as received.
Stability:	Stable for 12 months from date of receipt.
Predicted Protein Size:	38 kDa
Gene Name:	Wnt family member 8B
Database Link:	NP_003384 Entrez Gene 22423 Mouse Q93098
Background:	Wnt8b is a ligand for members of the frizzled family of seven transmembrane receptors. It may play an important role in the development and differentiation of certain forebrain structures, notably the hippocampus.
Synonyms:	member 8B; OTTHUMP00000020285; wingless-type MMTV integration site family
Note:	Immunogen Sequence Homology: Dog: 100%; Pig: 100%; Rat: 100%; Horse: 100%; Human: 100%; Mouse: 100%; Bovine: 100%; Rabbit: 100%; Guinea pig: 100%; Zebrafish: 86%

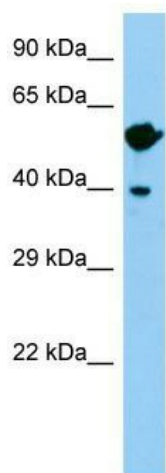


[View online »](#)

Protein Families: Cancer stem cells, ES Cell Differentiation/IPS, Secreted Protein, Stem cell relevant signaling - Wnt Signaling pathway

Protein Pathways: Basal cell carcinoma, Hedgehog signaling pathway, Melanogenesis, Pathways in cancer, Wnt signaling pathway

Product images:



Host: Rabbit; Target Name: Wnt8b; Sample Tissue: Mouse Testis lysates; Antibody Dilution: 1.0 ug/ml