

Product datasheet for **TA344393**

XPF (ERCC4) Rabbit Polyclonal Antibody

Product data:

Product Type:	Primary Antibodies
Applications:	WB
Recommended Dilution:	WB
Reactivity:	Human
Host:	Rabbit
Isotype:	IgG
Clonality:	Polyclonal
Immunogen:	The immunogen for anti-ERCC4 antibody: synthetic peptide directed towards the middle region of human ERCC4. Synthetic peptide located within the following region: FLLRLYRKTFEKDSKAEVWMMKFRKEDSSKRIRKSHKRPKDPQNKERAST
Formulation:	Liquid. Purified antibody supplied in 1x PBS buffer with 0.09% (w/v) sodium azide and 2% sucrose. <i>Note that this product is shipped as lyophilized powder to China customers.</i>
Purification:	Affinity Purified
Conjugation:	Unconjugated
Storage:	Store at -20°C as received.
Stability:	Stable for 12 months from date of receipt.
Predicted Protein Size:	101 kDa
Gene Name:	ERCC excision repair 4, endonuclease catalytic subunit
Database Link:	NP_005227 Entrez Gene 2072 Human Q92889
Background:	The protein encoded by this gene forms a complex with ERCC1 and is involved in the 5' incision made during nucleotide excision repair. This complex is a structure specific DNA repair endonuclease that interacts with EME1. Defects in this gene are a cause
Synonyms:	ERCC11; FANCO; RAD1; XFEPS; XPF
Note:	Immunogen Sequence Homology: Human: 100%; Rat: 85%; Horse: 85%; Dog: 83%

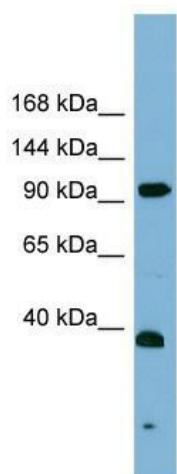


[View online »](#)

Protein Families: Druggable Genome

Protein Pathways: Nucleotide excision repair

Product images:



WB Suggested Anti-ERCC4 Antibody Titration: 0.2-1 ug/ml; ELISA Titer: 1:312500; Positive Control: PANC1 cell lysate ERCC4 is supported by BioGPS gene expression data to be expressed in PANC1