

Product datasheet for **TA344289**

UQCRFS1 Rabbit Polyclonal Antibody

Product data:

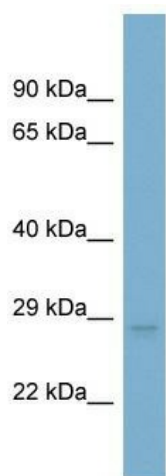
Product Type:	Primary Antibodies
Applications:	WB
Recommended Dilution:	WB
Reactivity:	Human
Host:	Rabbit
Isotype:	IgG
Clonality:	Polyclonal
Immunogen:	The immunogen for anti-UQCRFS1 antibody: synthetic peptide directed towards the N terminal of human UQCRFS1. Synthetic peptide located within the following region: MLSVASRSGPFAPVLSATSRGVAGALRPLVQATVPATPEQPVLDLKRPFL
Formulation:	Liquid. Purified antibody supplied in 1x PBS buffer with 0.09% (w/v) sodium azide and 2% sucrose. <i>Note that this product is shipped as lyophilized powder to China customers.</i>
Purification:	Affinity Purified
Conjugation:	Unconjugated
Storage:	Store at -20°C as received.
Stability:	Stable for 12 months from date of receipt.
Predicted Protein Size:	30 kDa
Gene Name:	ubiquinol-cytochrome c reductase, Rieske iron-sulfur polypeptide 1
Database Link:	NP_005994 Entrez Gene 7386 Human P47985
Background:	UQCRFS1 is the component of the ubiquinol-cytochrome c reductase complex (complex III or cytochrome b-c1 complex), which is a respiratory chain that generates an electrochemical potential coupled to ATP synthesis.
Synonyms:	RIP1; RIS1; RISP; UQCR5
Note:	Immunogen Sequence Homology: Dog: 100%; Pig: 100%; Rat: 100%; Human: 100%; Mouse: 100%; Bovine: 100%; Guinea pig: 93%



[View online »](#)

Protein Pathways: Alzheimer's disease, Cardiac muscle contraction, Huntington's disease, Metabolic pathways, Oxidative phosphorylation, Parkinson's disease

Product images:



WB Suggested Anti-UQCRFS1 Antibody Titration:
0.2-1 ug/ml; ELISA Titer: 1:1562500; Positive
Control: THP-1 cell lysate