

Product datasheet for **TA344281**

ERCC8 Rabbit Polyclonal Antibody

Product data:

Product Type:	Primary Antibodies
Applications:	WB
Recommended Dilution:	WB
Reactivity:	Human
Host:	Rabbit
Isotype:	IgG
Clonality:	Polyclonal
Immunogen:	The immunogen for anti-ERCC8 antibody: synthetic peptide directed towards the middle region of human ERCC8. Synthetic peptide located within the following region: FQELYSGRDCNILAWVPSLYEVPDDDETTTKSQLNPAFEDAWSSSDEE
Formulation:	Liquid. Purified antibody supplied in 1x PBS buffer with 0.09% (w/v) sodium azide and 2% sucrose. <i>Note that this product is shipped as lyophilized powder to China customers.</i>
Purification:	Affinity Purified
Conjugation:	Unconjugated
Storage:	Store at -20°C as received.
Stability:	Stable for 12 months from date of receipt.
Predicted Protein Size:	44 kDa
Gene Name:	ERCC excision repair 8, CSA ubiquitin ligase complex subunit
Database Link:	NP_000073 Entrez Gene 1161 Human Q13216
Background:	ERCC8 is a WD repeat protein, which interacts with Cockayne syndrome type B (CSB) protein and with p44 protein, a subunit of the RNA polymerase II transcription factor IIH. Mutations in this gene have been identified in patients with hereditary disease Cockayne syndrome (CS).
Synonyms:	CKN1; CSA; UVSS2
Note:	Immunogen Sequence Homology: Human: 100%; Horse: 90%

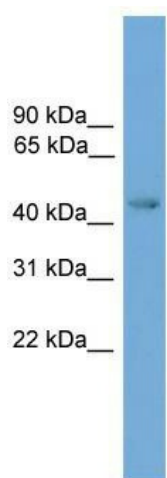


[View online »](#)

Protein Families: Druggable Genome, Transcription Factors

Protein Pathways: Nucleotide excision repair, Ubiquitin mediated proteolysis

Product images:



WB Suggested Anti-ERCC8 Antibody Titration: 0.2-1 ug/ml; ELISA Titer: 1:312500; Positive Control: Jurkat cell lysate