

## Product datasheet for **TA344257**

### GPR56 (ADGRG1) Rabbit Polyclonal Antibody

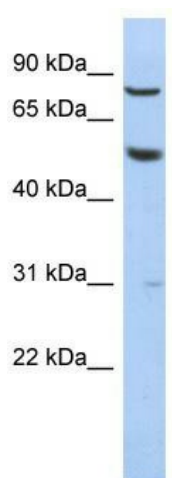
#### Product data:

Product Type:	Primary Antibodies
Applications:	WB
Recommended Dilution:	WB
Reactivity:	Human
Host:	Rabbit
Isotype:	IgG
Clonality:	Polyclonal
Immunogen:	The immunogen for anti-GPR56 antibody: synthetic peptide directed towards the N terminal of human GPR56. Synthetic peptide located within the following region: MAAGAAEAAVAAVEEVGSAGQFEELLRLKAKSLLVHFVWAPWAPQCAQMN
Formulation:	Liquid. Purified antibody supplied in 1x PBS buffer with 0.09% (w/v) sodium azide and 2% sucrose. <i>Note that this product is shipped as lyophilized powder to China customers.</i>
Purification:	Affinity Purified
Conjugation:	Unconjugated
Storage:	Store at -20°C as received.
Stability:	Stable for 12 months from date of receipt.
Predicted Protein Size:	76 kDa
Gene Name:	adhesion G protein-coupled receptor G1
Database Link:	<a href="#">NP_005673</a> <a href="#">Entrez Gene 9289 Human</a> <a href="#">Q9Y653</a>
Background:	GPR56 could be involved in cell-cell interactions.
Synonyms:	BFPP; BPPR; GPR56; TM7LN4; TM7XN1
Note:	Immunogen Sequence Homology: Human: 100%; Rabbit: 86%; Rat: 79%
Protein Families:	Druggable Genome, GPCR, Transmembrane



[View online »](#)

## Product images:



WB Suggested Anti-GPR56 Antibody Titration: 0.2-1 ug/ml; ELISA Titer: 1:312500; Positive Control: HepG2 cell lysate