

## Product datasheet for **TA344219**

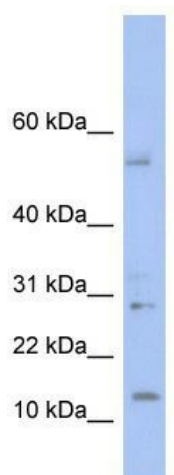
### TLX1NB Rabbit Polyclonal Antibody

#### Product data:

Product Type:	Primary Antibodies
Applications:	WB
Recommended Dilution:	WB
Reactivity:	Human
Host:	Rabbit
Isotype:	IgG
Clonality:	Polyclonal
Immunogen:	The immunogen for anti-TD1 antibody: synthetic peptide directed towards the middle region of human TD1. Synthetic peptide located within the following region: PPHPLNKQKHPPHPSQTQKDLVPRSPQLEKSRIRLRRTLRLNLGGGRGQR
Formulation:	Liquid. Purified antibody supplied in 1x PBS buffer with 0.09% (w/v) sodium azide and 2% sucrose. <i>Note that this product is shipped as lyophilized powder to China customers.</i>
Purification:	Affinity Purified
Conjugation:	Unconjugated
Storage:	Store at -20°C as received.
Stability:	Stable for 12 months from date of receipt.
Predicted Protein Size:	13 kDa
Gene Name:	TLX1 neighbor
Database Link:	<a href="#">NP_001078867</a> <a href="#">Entrez Gene 100038246 Human</a>
Background:	The specific function of this protein remains unknown.
Synonyms:	APT-B7; TD1; TDI
Note:	Immunogen Sequence Homology: Human: 100%



[View online »](#)

**Product images:**

WB Suggested Anti-TD1 Antibody Titration: 0.2-1 ug/ml; ELISA Titer: 1:312500; Positive Control: Human Thymus