

## Product datasheet for **TA344181**

### Apolipoprotein L 5 (APOL5) Rabbit Polyclonal Antibody

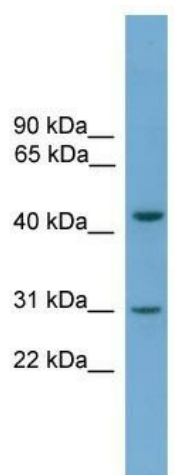
#### Product data:

Product Type:	Primary Antibodies
Applications:	WB
Recommended Dilution:	WB
Reactivity:	Human
Host:	Rabbit
Isotype:	IgG
Clonality:	Polyclonal
Immunogen:	The immunogen for anti-APOL5 antibody: synthetic peptide directed towards the C terminal of human APOL5. Synthetic peptide located within the following region: PVVEHQPRLGPGVALRTPKRTVSAPRMLGHQPAPPAPARKGRQAPGRHRQ
Formulation:	Liquid. Purified antibody supplied in 1x PBS buffer with 0.09% (w/v) sodium azide and 2% sucrose. <i>Note that this product is shipped as lyophilized powder to China customers.</i>
Purification:	Affinity Purified
Conjugation:	Unconjugated
Storage:	Store at -20°C as received.
Stability:	Stable for 12 months from date of receipt.
Predicted Protein Size:	47 kDa
Gene Name:	apolipoprotein L5
Database Link:	<a href="#">NP_085145</a> <a href="#">Entrez Gene 80831 Human</a> <a href="#">Q9BWW9</a>
Background:	This gene is a member of the apolipoprotein L gene family. The encoded protein is found in the cytoplasm, where it may affect the movement of lipids or allow the binding of lipids to organelles.
Synonyms:	APOL-V; APOLV
Note:	Immunogen Sequence Homology: Human: 100%



[View online »](#)

## Product images:



WB Suggested Anti-APOL5 Antibody Titration: 0.2-1 ug/ml; ELISA Titer: 1:312500; Positive Control: Human heart