

Product datasheet for **TA344147**

UBE2I Rabbit Polyclonal Antibody

Product data:

Product Type:	Primary Antibodies
Applications:	WB
Recommended Dilution:	WB, IHC
Reactivity:	Human
Host:	Rabbit
Isotype:	IgG
Clonality:	Polyclonal
Immunogen:	The immunogen for anti-SLC38A4 antibody: synthetic peptide directed towards the middle region of human SLC38A4. Synthetic peptide located within the following region: LAALFGYLTFYGEVEDELLHAYSKVYTLDIPLLMVRLAVLVAVTLTVPIV
Formulation:	Liquid. Purified antibody supplied in 1x PBS buffer with 0.09% (w/v) sodium azide and 2% sucrose. <i>Note that this product is shipped as lyophilized powder to China customers.</i>
Purification:	Affinity Purified
Conjugation:	Unconjugated
Storage:	Store at -20°C as received.
Stability:	Stable for 12 months from date of receipt.
Predicted Protein Size:	17 kDa
Gene Name:	ubiquitin conjugating enzyme E2 I
Database Link:	NP_003336 Entrez Gene 7329 Human P63279



[View online »](#)

Background:

SLC38A4 is found predominantly in liver and transports both cationic and neutral amino acids. The transport of cationic amino acids by SLC38A4 is Na(+) and pH independent, while the transport of neutral amino acids is Na(+) and pH dependent. The modification of proteins with ubiquitin is an important cellular mechanism for targeting abnormal or short-lived proteins for degradation. Ubiquitination involves at least three classes of enzymes: ubiquitin-activating enzymes, or E1s, ubiquitin-conjugating enzymes, or E2s, and ubiquitin-protein ligases, or E3s. This gene encodes a member of the E2 ubiquitin-conjugating enzyme family. Four alternatively spliced transcript variants encoding the same protein have been found for this gene.

Synonyms:

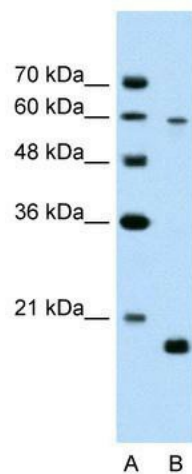
C358B7.1; P18; UBC9

Note:

Immunogen Sequence Homology: Dog: 100%; Pig: 100%; Rat: 100%; Human: 100%; Mouse: 100%; Bovine: 100%; Horse: 92%; Rabbit: 92%; Guinea pig: 92%; Zebrafish: 90%

Protein Pathways:

Ubiquitin mediated proteolysis

Product images:

WB Suggested Anti-SLC38A4 Antibody Titration:
2.5 ug/ml; Positive Control: Jurkat cell lysate