

Product datasheet for TA344132

Sarcosine Oxidase (PIPOX) Rabbit Polyclonal Antibody

Product data:

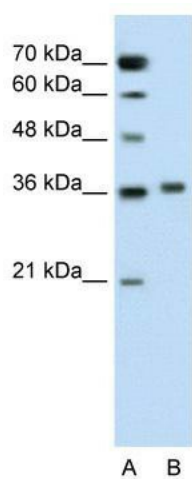
Product Type:	Primary Antibodies
Applications:	WB
Recommended Dilution:	WB
Reactivity:	Human
Host:	Rabbit
Isotype:	IgG
Clonality:	Polyclonal
Immunogen:	The immunogen for anti-PIPOX antibody: synthetic peptide directed towards the C terminal of human PIPOX. Synthetic peptide located within the following region: FVRDHLPLDKPEPAVIESCMYTNTPDEQFILDRHPKYDNIVIGAGFSGHG
Formulation:	Liquid. Purified antibody supplied in 1x PBS buffer with 0.09% (w/v) sodium azide and 2% sucrose. <i>Note that this product is shipped as lyophilized powder to China customers.</i>
Purification:	Affinity Purified
Conjugation:	Unconjugated
Storage:	Store at -20°C as received.
Stability:	Stable for 12 months from date of receipt.
Predicted Protein Size:	43 kDa
Gene Name:	pipecolic acid and sarcosine oxidase
Database Link:	NP_057602 Entrez Gene 51268 Human Q9P0Z9
Background:	PIPOX metabolizes sarcosine, L-pipecolic acid and L-proline.
Synonyms:	LPIPOX
Note:	Immunogen Sequence Homology: Dog: 100%; Rat: 100%; Human: 100%; Mouse: 100%; Bovine: 100%; Rabbit: 100%; Pig: 93%; Horse: 93%; Guinea pig: 93%; Zebrafish: 85%
Protein Families:	Transmembrane



[View online »](#)

Protein Pathways: Glycine, serine and threonine metabolism, Lysine degradation, Metabolic pathways

Product images:



WB Suggested Anti-PIPOX Antibody Titration: 0.2-1 ug/ml; Positive Control: Jurkat cell lysate