

## Product datasheet for **TA344113**

### PSD3 Rabbit Polyclonal Antibody

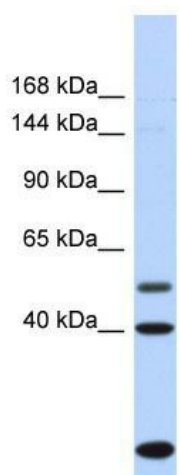
#### Product data:

Product Type:	Primary Antibodies
Applications:	WB
Recommended Dilution:	WB
Reactivity:	Human
Host:	Rabbit
Isotype:	IgG
Clonality:	Polyclonal
Immunogen:	The immunogen for Anti-PSD3 antibody is: synthetic peptide directed towards the C-terminal region of Human PSD3. Synthetic peptide located within the following region: DESEAAGLKKSHSSPSLNPDTSPITAKVKRNVSERKDHRPETPSIKQKVT
Formulation:	Liquid. Purified antibody supplied in 1x PBS buffer with 0.09% (w/v) sodium azide and 2% sucrose. <i>Note that this product is shipped as lyophilized powder to China customers.</i>
Purification:	Affinity Purified
Conjugation:	Unconjugated
Storage:	Store at -20°C as received.
Stability:	Stable for 12 months from date of receipt.
Predicted Protein Size:	41 kDa
Gene Name:	pleckstrin and Sec7 domain containing 3
Database Link:	<a href="#">NP_056125</a> <a href="#">Entrez Gene 23362 Human</a> <a href="#">Q9NYY0</a>
Background:	The function of this protein remains unknown.
Synonyms:	EFA6D; EFA6R; HCA67
Note:	Immunogen Sequence Homology: Dog: 100%; Pig: 100%; Human: 100%; Bovine: 100%; Rabbit: 100%; Rat: 93%; Mouse: 93%; Guinea pig: 93%; Zebrafish: 90%; Horse: 86%
Protein Pathways:	Endocytosis



[View online »](#)

Product images:



Host: Rabbit; Target Name: PSD3; Sample Tissue: Fetal Heart lysates; Antibody Dilution: 1.0 ug/ml