

Product datasheet for **TA344099**

RHOD Rabbit Polyclonal Antibody

Product data:

Product Type:	Primary Antibodies
Applications:	WB
Recommended Dilution:	WB
Reactivity:	Human
Host:	Rabbit
Isotype:	IgG
Clonality:	Polyclonal
Immunogen:	The immunogen for anti-RHOD antibody: synthetic peptide directed towards the N terminal of human RHOD. Synthetic peptide located within the following region: TAAQAAGEEAPPGVRSVKVVLVGDGGCGKTSLLMVFADGAFPESTPTVF
Formulation:	Liquid. Purified antibody supplied in 1x PBS buffer with 0.09% (w/v) sodium azide and 2% sucrose. <i>Note that this product is shipped as lyophilized powder to China customers.</i>
Purification:	Affinity Purified
Conjugation:	Unconjugated
Storage:	Store at -20°C as received.
Stability:	Stable for 12 months from date of receipt.
Predicted Protein Size:	23 kDa
Gene Name:	ras homolog family member D
Database Link:	NP_055393 Entrez Gene 29984 Human O00212



[View online »](#)

Background:

Ras homolog, or Rho, proteins interact with protein kinases and may serve as targets for activated GTPase. They play a critical role in muscle differentiation. RHOD binds GTP and is a member of the small GTPase superfamily. It is involved in endosome dynamics and reorganization of the actin cytoskeleton, and it may coordinate membrane transport with the function of the cytoskeleton. Ras homolog, or Rho, proteins interact with protein kinases and may serve as targets for activated GTPase. They play a critical role in muscle differentiation. The protein encoded by this gene binds GTP and is a member of the small GTPase superfamily. It is involved in endosome dynamics and reorganization of the actin cytoskeleton, and it may coordinate membrane transport with the function of the cytoskeleton. Publication Note: This RefSeq record includes a subset of the publications that are available for this gene. Please see the Entrez Gene record to access additional publications.

Synonyms:

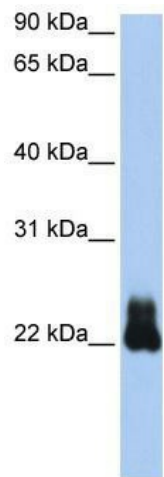
ARHD; Rho; RHOHP1; RHOM

Note:

Immunogen Sequence Homology: Human: 100%; Pig: 79%; Rat: 79%; Guinea pig: 79%

Protein Pathways:

Axon guidance

Product images:

WB Suggested Anti-RHOD Antibody Titration: 0.2-1 ug/ml; Positive Control: Transfected 293T