

Product datasheet for **TA344087**

Naked1 (NKD1) Rabbit Polyclonal Antibody

Product data:

Product Type:	Primary Antibodies
Applications:	WB
Recommended Dilution:	WB
Reactivity:	Human
Host:	Rabbit
Isotype:	IgG
Clonality:	Polyclonal
Immunogen:	The immunogen for anti-NKD1 antibody: synthetic peptide directed towards the middle region of human NKD1. Synthetic peptide located within the following region: LASGGPVLGREHLRELPALVYESQAGQPVRHEHHHHHEHHHHYHHFYQ
Formulation:	Liquid. Purified antibody supplied in 1x PBS buffer with 0.09% (w/v) sodium azide and 2% sucrose. <i>Note that this product is shipped as lyophilized powder to China customers.</i>
Purification:	Affinity Purified
Conjugation:	Unconjugated
Storage:	Store at -20°C as received.
Stability:	Stable for 12 months from date of receipt.
Predicted Protein Size:	52 kDa
Gene Name:	naked cuticle homolog 1
Database Link:	NP_149110 Entrez Gene 85407 Human Q969G9
Background:	In the mouse, Nkd is a Dishevelled -binding protein that functions as a negative regulator of the Wnt-beta-catenin -Tcf signaling pathway.
Synonyms:	Naked1
Note:	Immunogen Sequence Homology: Human: 100%; Rat: 93%; Horse: 93%; Mouse: 93%; Bovine: 93%; Rabbit: 93%; Pig: 92%; Guinea pig: 92%; Dog: 86%

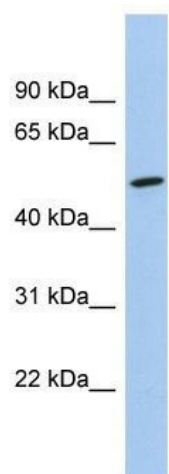


[View online »](#)

Protein Families: Druggable Genome

Protein Pathways: Wnt signaling pathway

Product images:



WB Suggested Anti-NKD1 Antibody Titration: 0.2-1 ug/ml; Positive Control: 721_B cell lysate