

## Product datasheet for **TA344086**

### Naked1 (NKD1) Rabbit Polyclonal Antibody

#### Product data:

Product Type:	Primary Antibodies
Applications:	IHC, WB
Recommended Dilution:	WB, IHC
Reactivity:	Human
Host:	Rabbit
Isotype:	IgG
Clonality:	Polyclonal
Immunogen:	The immunogen for anti-NKD1 antibody: synthetic peptide directed towards the N terminal of human NKD1. Synthetic peptide located within the following region: ELVGDLRDTLSEEEEDDFRLEVALPPEKTDGLGSGDEKKMERVSEPCPG
Formulation:	Liquid. Purified antibody supplied in 1x PBS buffer with 0.09% (w/v) sodium azide and 2% sucrose. <i>Note that this product is shipped as lyophilized powder to China customers.</i>
Purification:	Affinity Purified
Conjugation:	Unconjugated
Storage:	Store at -20°C as received.
Stability:	Stable for 12 months from date of receipt.
Predicted Protein Size:	52 kDa
Gene Name:	naked cuticle homolog 1
Database Link:	<a href="#">NP_149110</a> <a href="#">Entrez Gene 85407 Human Q969G9</a>
Background:	In the mouse, Nkd is a Dishevelled -binding protein that functions as a negative regulator of the Wnt-beta-catenin -Tcf signaling pathway. In the mouse, Nkd is a Dishevelled (see DVL1; MIM 601365)-binding protein that functions as a negative regulator of the Wnt (see WNT1; MIM 164820)-beta-catenin (see MIM 116806)-Tcf (see MIM 602272) signaling pathway. [supplied by OMIM]
Synonyms:	Naked1



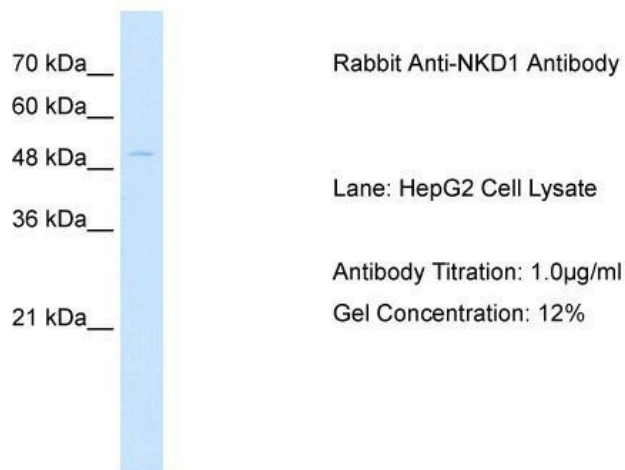
[View online »](#)

**Note:** Immunogen Sequence Homology: Pig: 100%; Human: 100%; Guinea pig: 100%; Dog: 92%; Rat: 92%; Mouse: 85%; Bovine: 85%

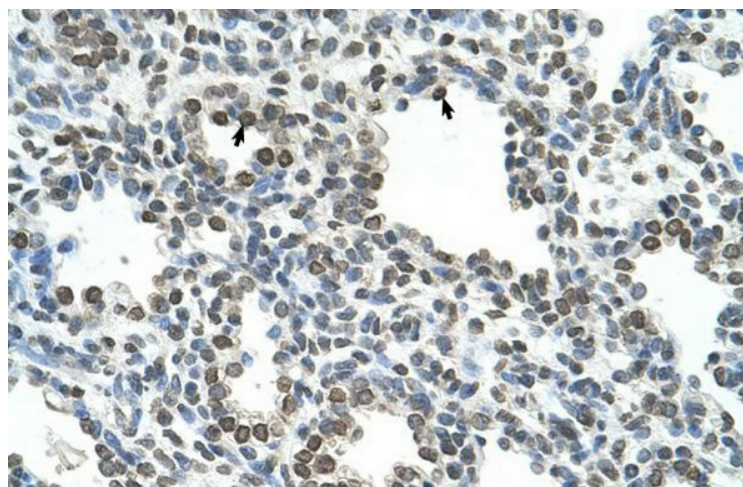
**Protein Families:** Druggable Genome

**Protein Pathways:** Wnt signaling pathway

**Product images:**



WB Suggested Anti-NKD1 Antibody; Titration: 1 ug/ml; Positive Control: HepG2 cell lysate



Rabbit Anti-NKD1 Antibody; Paraffin Embedded Tissue: Human Lung; Cellular Data: Alveolar cells; Antibody Concentration: 4.0-8.0 ug/ml; Magnification: 400X