

## Product datasheet for **TA344082**

### WNT5B Rabbit Polyclonal Antibody

#### Product data:

Product Type:	Primary Antibodies
Applications:	WB
Recommended Dilution:	WB
Reactivity:	Human
Host:	Rabbit
Isotype:	IgG
Clonality:	Polyclonal
Immunogen:	The immunogen for anti-WNT5B antibody: synthetic peptide directed towards the C terminal of human WNT5B. Synthetic peptide located within the following region: GRLCNKTSEGMDGCELMCCGRGYNQFKSVQVERCHCKFWCCFVRCKKCT
Formulation:	Liquid. Purified antibody supplied in 1x PBS buffer with 0.09% (w/v) sodium azide and 2% sucrose. <i>Note that this product is shipped as lyophilized powder to China customers.</i>
Purification:	Affinity Purified
Conjugation:	Unconjugated
Storage:	Store at -20°C as received.
Stability:	Stable for 12 months from date of receipt.
Predicted Protein Size:	39 kDa
Gene Name:	Wnt family member 5B
Database Link:	<a href="#">NP_116031</a> <a href="#">Entrez Gene 81029 Human</a> <a href="#">Q9H1J7</a>



[View online »](#)

**Background:**

The WNT gene family consists of structurally related genes which encode secreted signaling proteins. These proteins have been implicated in oncogenesis and in several developmental processes, including regulation of cell fate and patterning during embryogenesis. WNT5B gene is a member of the WNT gene family. WNT5B shows 94% and 80% amino acid identity to the mouse Wnt5b protein and the human WNT5A protein. The WNT gene family consists of structurally related genes which encode secreted signaling proteins. These proteins have been implicated in oncogenesis and in several developmental processes, including regulation of cell fate and patterning during embryogenesis. This gene is a member of the WNT gene family. It encodes a protein which shows 94% and 80% amino acid identity to the mouse Wnt5b protein and the human WNT5A protein, respectively. Alternative splicing of this gene generates 2 transcript variants.

**Synonyms:**

MGC2648

**Note:**

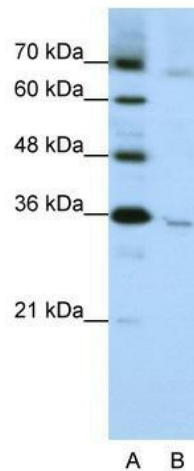
Immunogen Sequence Homology: Human: 100%; Dog: 93%; Pig: 93%; Rat: 93%; Rabbit: 93%; Horse: 86%; Mouse: 86%; Bovine: 86%; Guinea pig: 86%

**Protein Families:**

Secreted Protein

**Protein Pathways:**

Basal cell carcinoma, Hedgehog signaling pathway, Melanogenesis, Pathways in cancer, Wnt signaling pathway

**Product images:**

WB Suggested Anti-WNT5B Antibody Titration:  
1.25 ug/ml; Positive Control: HepG2 cell lysate