

Product datasheet for **TA344071**

Frizzled 10 (FZD10) Rabbit Polyclonal Antibody

Product data:

| | |
|-------------------------|---|
| Product Type: | Primary Antibodies |
| Applications: | WB |
| Recommended Dilution: | WB |
| Reactivity: | Human |
| Host: | Rabbit |
| Isotype: | IgG |
| Clonality: | Polyclonal |
| Immunogen: | The immunogen for anti-FZD10 antibody: synthetic peptide directed towards the N terminal of human FZD10. Synthetic peptide located within the following region: PIEIPMCKDIGYNMTRMPNLMGHENQREAAIQLHEFAPLVEYGCHGHLRF |
| Formulation: | Liquid. Purified antibody supplied in 1x PBS buffer with 0.09% (w/v) sodium azide and 2% sucrose. <i>Note that this product is shipped as lyophilized powder to China customers.</i> |
| Purification: | Affinity Purified |
| Conjugation: | Unconjugated |
| Storage: | Store at -20°C as received. |
| Stability: | Stable for 12 months from date of receipt. |
| Predicted Protein Size: | 65 kDa |
| Gene Name: | frizzled class receptor 10 |
| Database Link: | NP_009128 Entrez Gene 11211 Human Q9ULW2 |



[View online »](#)

Background:

FZD10 is a member of the frizzled family. Members of this family are 7-transmembrane domain proteins that are receptors for the Wingless type MMTV integration site family of signaling proteins. Most frizzled receptors are coupled to the beta-catenin canonical signaling pathway. Using array analysis, expression of this intronless gene is significantly up-regulated in two cases of primary colon cancer. This gene is a member of the frizzled gene family. Members of this family encode 7-transmembrane domain proteins that are receptors for the Wingless type MMTV integration site family of signaling proteins. Most frizzled receptors are coupled to the beta-catenin canonical signaling pathway. Using array analysis, expression of this intronless gene is significantly up-regulated in two cases of primary colon cancer.

Synonyms:

CD350; FZ-10; Fz10; FzE7; hFz10

Note:

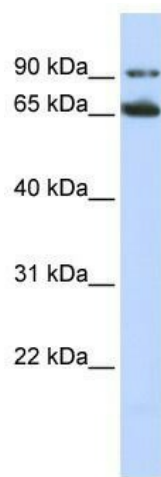
Immunogen Sequence Homology: Dog: 100%; Pig: 100%; Horse: 100%; Human: 100%; Mouse: 100%; Bovine: 100%; Zebrafish: 79%

Protein Families:

Druggable Genome, GPCR, Transmembrane

Protein Pathways:

Basal cell carcinoma, Colorectal cancer, Melanogenesis, Pathways in cancer, Wnt signaling pathway

Product images:

WB Suggested Anti-FZD10 Antibody Titration: 0.2-1 ug/ml; ELISA Titer: 1: 62500; Positive Control: HepG2 cell lysate