

Product datasheet for **TA344058**

Frizzled 2 (FZD2) Rabbit Polyclonal Antibody

Product data:

Product Type:	Primary Antibodies
Applications:	WB
Recommended Dilution:	WB
Reactivity:	Human
Host:	Rabbit
Isotype:	IgG
Clonality:	Polyclonal
Immunogen:	The immunogen for anti-FZD2 antibody: synthetic peptide directed towards the N terminal of human FZD2. Synthetic peptide located within the following region: MRPRSALPRLLLPLLLLPAAGPAQFHGEGKISIPDHGFCQPISIPLECTDI
Formulation:	Liquid. Purified antibody supplied in 1x PBS buffer with 0.09% (w/v) sodium azide and 2% sucrose. <i>Note that this product is shipped as lyophilized powder to China customers.</i>
Purification:	Affinity Purified
Conjugation:	Unconjugated
Storage:	Store at -20°C as received.
Stability:	Stable for 12 months from date of receipt.
Predicted Protein Size:	63 kDa
Gene Name:	frizzled class receptor 2
Database Link:	NP_001457 Entrez Gene 2535 Human Q14332
Background:	Members of the 'frizzled' gene family encode 7-transmembrane domain proteins that are receptors for Wnt signaling proteins. The expression of the FZD2 gene appears to be developmentally regulated, with high levels of expression in fetal kidney and lung and
Synonyms:	fz-2; Fz2; fzE2; hFz2
Note:	Immunogen Sequence Homology: Dog: 100%; Rat: 100%; Horse: 100%; Human: 100%; Mouse: 100%; Bovine: 100%

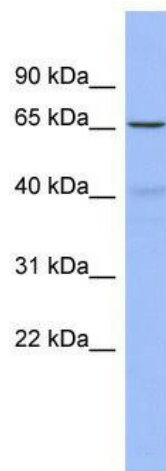


[View online »](#)

Protein Families: Druggable Genome, GPCR, Transmembrane

Protein Pathways: Basal cell carcinoma, Colorectal cancer, Melanogenesis, Pathways in cancer, Wnt signaling pathway

Product images:



WB Suggested Anti-FZD2 Antibody Titration: 0.2-1 ug/ml; ELISA Titer: 1: 1562500; Positive Control: Human Spleen