

Product datasheet for **TA344030**

TMED4 Rabbit Polyclonal Antibody

Product data:

Product Type:	Primary Antibodies
Applications:	IHC, WB
Recommended Dilution:	WB, IHC
Reactivity:	Human
Host:	Rabbit
Isotype:	IgG
Clonality:	Polyclonal
Immunogen:	The immunogen for anti-TMED4 antibody: synthetic peptide directed towards the N terminal of human TMED4. Synthetic peptide located within the following region: LRAMGRQALLLLALCATGAQGLYFHIGETEKRCFIEEIPDETMVIGNYRT
Formulation:	Liquid. Purified antibody supplied in 1x PBS buffer with 0.09% (w/v) sodium azide and 2% sucrose. <i>Note that this product is shipped as lyophilized powder to China customers.</i>
Purification:	Protein A purified
Conjugation:	Unconjugated
Storage:	Store at -20°C as received.
Stability:	Stable for 12 months from date of receipt.
Predicted Protein Size:	25 kDa
Gene Name:	transmembrane p24 trafficking protein 4
Database Link:	NP_872353 Entrez Gene 222068 Human Q7Z7H5
Background:	TMED4 contains 1 GOLD domain and belongs to the EMP24/GP25L family. The function remains unknown.
Synonyms:	ERS25; GMP25iso; HNFL; p24a3; p24alpha3
Note:	Immunogen Sequence Homology: Human: 100%; Rabbit: 92%; Mouse: 91%; Zebrafish: 90%; Pig: 86%; Rat: 86%; Bovine: 79%; Guinea pig: 79%



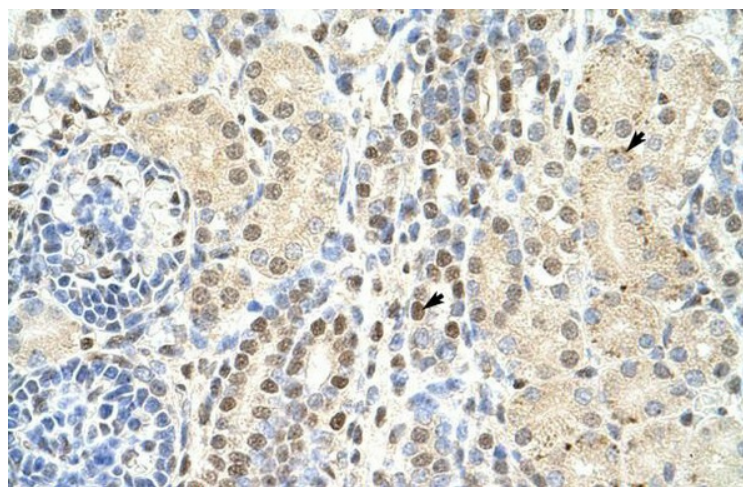
[View online »](#)

Protein Families: Transmembrane

Product images:



WB Suggested Anti-TMED4 Antibody Titration:
1.25 ug/ml; ELISA Titer: 1: 1562500; Positive
Control: HepG2 cell lysate



Rabbit Anti-TMED4 Antibody; Paraffin Embedded
Tissue: Human Kidney; Cellular Data: Epithelial
cells of renal tubule; Antibody Concentration: 4.0-
8.0 ug/ml; Magnification: 400X