

Product datasheet for **TA344019**

SF4 (SUGP1) Rabbit Polyclonal Antibody

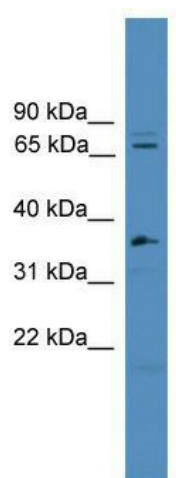
Product data:

Product Type:	Primary Antibodies
Applications:	WB
Recommended Dilution:	WB
Reactivity:	Human
Host:	Rabbit
Isotype:	IgG
Clonality:	Polyclonal
Immunogen:	The immunogen for anti-SF4 antibody: synthetic peptide directed towards the C terminal of human SF4. Synthetic peptide located within the following region: LGSEGQGIKNPVNKGTTTVDGAGFGIDRPAELSKEDDEYEAFRKRMMMLAY
Formulation:	Liquid. Purified antibody supplied in 1x PBS buffer with 0.09% (w/v) sodium azide and 2% sucrose. <i>Note that this product is shipped as lyophilized powder to China customers.</i>
Purification:	Affinity Purified
Conjugation:	Unconjugated
Storage:	Store at -20°C as received.
Stability:	Stable for 12 months from date of receipt.
Predicted Protein Size:	72 kDa
Gene Name:	SURP and G-patch domain containing 1
Database Link:	NP_757386 Entrez Gene 57794 Human Q8IYWZ8
Background:	SF4 is a member of the SURP family of splicing factors.
Synonyms:	F23858; RBP; SF4
Note:	Immunogen Sequence Homology: Dog: 100%; Pig: 100%; Rat: 100%; Horse: 100%; Human: 100%; Mouse: 100%; Bovine: 100%; Rabbit: 100%; Guinea pig: 100%; Zebrafish: 86%



[View online »](#)

Product images:



WB Suggested Anti-SF4 Antibody Titration: 0.2-1 ug/ml; ELISA Titer: 1: 62500; Positive Control: COLO205 cell lysate