

Product datasheet for **TA343772**

CoREST (RCOR1) Rabbit Polyclonal Antibody

Product data:

Product Type:	Primary Antibodies
Applications:	WB
Recommended Dilution:	WB
Reactivity:	Human
Host:	Rabbit
Isotype:	IgG
Clonality:	Polyclonal
Immunogen:	The immunogen for anti-RCOR1 antibody: synthetic peptide directed towards the C terminal of human RCOR1. Synthetic peptide located within the following region: DEVLQEWEAEHGKEETNGPSNQKPVKSPDNSIKMPEEEDAPVLDVRYAS
Formulation:	Liquid. Purified antibody supplied in 1x PBS buffer with 0.09% (w/v) sodium azide and 2% sucrose. <i>Note that this product is shipped as lyophilized powder to China customers.</i>
Purification:	Affinity Purified
Conjugation:	Unconjugated
Storage:	Store at -20°C as received.
Stability:	Stable for 12 months from date of receipt.
Predicted Protein Size:	53 kDa
Gene Name:	REST corepressor 1
Database Link:	NP_055971 Entrez Gene 23186 Human Q9UKL0
Background:	RCOR1 is a functional corepressor required for regulation of neural-specific gene expression. The RCOR gene encodes a functional corepressor required for regulation of neural-specific gene expression. [supplied by OMIM]
Synonyms:	CoREST; RCOR
Note:	Immunogen Sequence Homology: Dog: 100%; Human: 100%; Horse: 92%; Bovine: 86%; Pig: 79%; Mouse: 79%; Guinea pig: 79%

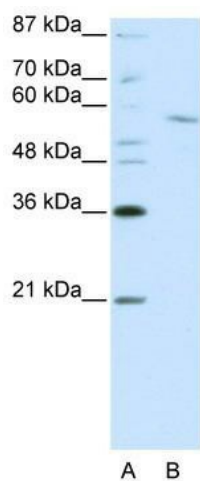


[View online »](#)

Protein Families: Transcription Factors

Protein Pathways: Huntington's disease

Product images:



WB Suggested Anti-RCOR1 Antibody Titration:
0.2-1 ug/ml; ELISA Titer: 1: 12500; Positive
Control: Jurkat cell lysate; RCOR1 is supported by
BioGPS gene expression data to be expressed in
Jurkat