

## Product datasheet for **TA343726**

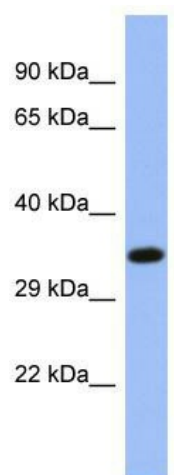
### NR2E3 Rabbit Polyclonal Antibody

#### Product data:

|                         |  |
|-------------------------|--|
| Product Type:           | Primary Antibodies   |
| Applications:           | WB   |
| Recommended Dilution:   | WB   |
| Reactivity:             | Human  |
| Host:                   | Rabbit   |
| Isotype:                | IgG  |
| Clonality:              | Polyclonal   |
| Immunogen:              | The immunogen for Anti-NR2E3 antibody is: synthetic peptide directed towards the C-terminal region of Human NR2E3. Synthetic peptide located within the following region: EHVEALQDQSQVMLSQHSKAHHPSQPVRFGKLLLLLPSLRFITAERIELL |
| Formulation:            | Liquid. Purified antibody supplied in 1x PBS buffer with 0.09% (w/v) sodium azide and 2% sucrose.<br><i>Note that this product is shipped as lyophilized powder to China customers.</i>                                      |
| Purification:           | Affinity Purified  |
| Conjugation:            | Unconjugated   |
| Storage:                | Store at -20°C as received.  |
| Stability:              | Stable for 12 months from date of receipt.   |
| Predicted Protein Size: | 35 kDa   |
| Gene Name:              | nuclear receptor subfamily 2 group E member 3  |
| Database Link:          | <a href="#">NP_055064</a><br><a href="#">Entrez Gene 10002 Human Q9Y5X4</a>  |
| Background:             | The function of this protein remains unknown.  |
| Synonyms:               | ESCS; PNR; rd7; RNR; RP37  |
| Note:                   | Immunogen Sequence Homology: Pig: 100%; Rat: 100%; Horse: 100%; Human: 100%; Mouse: 100%; Bovine: 100%; Guinea pig: 86%  |
| Protein Families:       | Druggable Genome, Nuclear Hormone Receptor, Transcription Factors  |



[View online »](#)

**Product images:**

Host: Rabbit; Target Name: NR2E3; Sample  
Tissue: OVCAR-3 Whole cell lysates; Antibody  
Dilution: 1.0 ug/ml