

Product datasheet for **TA343703**

ZNF281 Rabbit Polyclonal Antibody

Product data:

Product Type:	Primary Antibodies
Applications:	WB
Recommended Dilution:	WB
Reactivity:	Human
Host:	Rabbit
Isotype:	IgG
Clonality:	Polyclonal
Immunogen:	The immunogen for anti-ZNF281 antibody: synthetic peptide directed towards the middle region of human ZNF281. Synthetic peptide located within the following region: PMTFITNSNGEVDHRVRTSVSDFSGYTNMMSDVSEPCSTRVKTPTSQSYR
Formulation:	Liquid. Purified antibody supplied in 1x PBS buffer with 0.09% (w/v) sodium azide and 2% sucrose. <i>Note that this product is shipped as lyophilized powder to China customers.</i>
Purification:	Affinity Purified
Conjugation:	Unconjugated
Storage:	Store at -20°C as received.
Stability:	Stable for 12 months from date of receipt.
Predicted Protein Size:	97 kDa
Gene Name:	zinc finger protein 281
Database Link:	NP_036614 Entrez Gene 23528 Human Q9Y2X9
Background:	ZNF281 belongs to the krueppel C2H2-type zinc-finger protein family. It contains 4 C2H2-type zinc fingers. ZNF281 may be involved in transcriptional regulation. It represses the transcription of a number of genes including gastrin and ornithine decarboxylase. ZNF281 binds to the G-rich box in the enhancer region of these genes.
Synonyms:	ZBP-99; ZNP-99

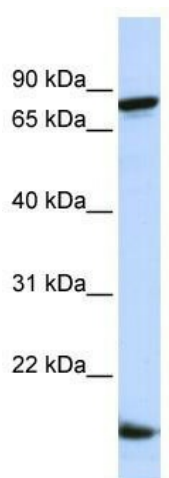


[View online »](#)

Note: Immunogen Sequence Homology: Pig: 100%; Rat: 100%; Horse: 100%; Human: 100%; Mouse: 100%; Bovine: 100%; Rabbit: 100%; Zebrafish: 100%; Guinea pig: 100%

Protein Families: ES Cell Differentiation/IPS, Stem cell - Pluripotency, Transcription Factors

Product images:



WB Suggested Anti-ZNF281 Antibody Titration:
0.2-1 ug/ml; ELISA Titer: 1: 312500; Positive
Control: Hela cell lysate