

## Product datasheet for **TA343666**

### PMF1 Rabbit Polyclonal Antibody

#### Product data:

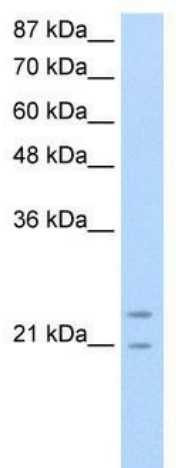
Product Type:	Primary Antibodies
Applications:	IHC, WB
Recommended Dilution:	WB, IHC
Reactivity:	Human
Host:	Rabbit
Isotype:	IgG
Clonality:	Polyclonal
Immunogen:	The immunogen for anti-PMF1 antibody: synthetic peptide directed towards the N terminal of human PMF1. Synthetic peptide located within the following region: MVDTFLQKLVAAGSYQRFTDCYKCFYQLQPAMTQRIYDKFIAQLQTSIRE
Formulation:	Liquid. Purified antibody supplied in 1x PBS buffer with 0.09% (w/v) sodium azide and 2% sucrose. <i>Note that this product is shipped as lyophilized powder to China customers.</i>
Purification:	Affinity Purified
Conjugation:	Unconjugated
Storage:	Store at -20°C as received.
Stability:	Stable for 12 months from date of receipt.
Predicted Protein Size:	19 kDa
Gene Name:	polyamine-modulated factor 1
Database Link:	<a href="#">NP_009152</a> <a href="#">Entrez Gene 11243 Human</a> <a href="#">Q6P1K2</a>
Background:	PMF1 is part of the MIS12 complex which is required for normal chromosome alignment and segregation and kinetochore formation during mitosis. It may act as a cotranscription partner of NFE2L2 involved in regulation of polyamine-induced transcription of SSAT.
Synonyms:	Est1p-like protein B (EST1B); OTTHUMP00000016581; polyamine-modulated factor 1
Note:	Immunogen Sequence Homology: Goat: 100%; Dog: 93%; Pig: 93%; Horse: 93%; Human: 93%; Bovine: 93%; Rabbit: 93%; Guinea pig: 92%; Rat: 85%; Mouse: 77%



[View online »](#)

Protein Families: Stem cell - Pluripotency

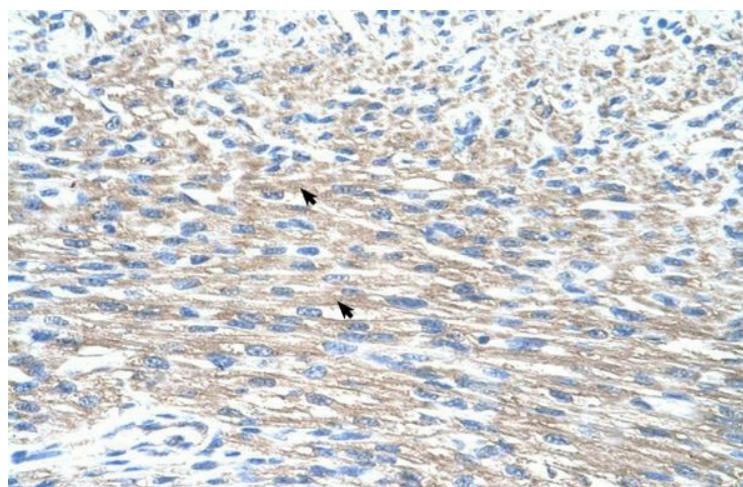
### Product images:



WB Suggested Anti-PMF1 Antibody Titration: 0.2-1 ug/ml; Positive Control: Transfected 293T



Human kidney



Human Heart