

Product datasheet for **TA343631**

CA150 (TCERG1) Rabbit Polyclonal Antibody

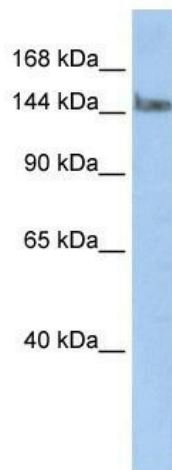
Product data:

Product Type:	Primary Antibodies
Applications:	WB
Recommended Dilution:	WB
Reactivity:	Human
Host:	Rabbit
Isotype:	IgG
Clonality:	Polyclonal
Immunogen:	The immunogen for anti-TCERG1 antibody: synthetic peptide directed towards the N terminal of human TCERG1. Synthetic peptide located within the following region: AERGGDGGESERFNPGLRMAQQALRFRGPAPPPNAVMRGPPPLMRPPP
Formulation:	Liquid. Purified antibody supplied in 1x PBS buffer with 0.09% (w/v) sodium azide and 2% sucrose. <i>Note that this product is shipped as lyophilized powder to China customers.</i>
Purification:	Affinity Purified
Conjugation:	Unconjugated
Storage:	Store at -20°C as received.
Stability:	Stable for 12 months from date of receipt.
Predicted Protein Size:	124 kDa
Gene Name:	transcription elongation regulator 1
Database Link:	NP_006697 Entrez Gene 10915 Human O14776



[View online »](#)

- Background:** TCERG1 is a nuclear protein that regulates transcriptional elongation and pre-mRNA splicing. TCERG1 interacts with the hyperphosphorylated C-terminal domain of RNA polymerase II via multiple FF domains, and with the pre-mRNA splicing factor SF1 via a WW domain. This gene encodes a nuclear protein that regulates transcriptional elongation and pre-mRNA splicing. The encoded protein interacts with the hyperphosphorylated C-terminal domain of RNA polymerase II via multiple FF domains, and with the pre-mRNA splicing factor SF1 via a WW domain. Alternative splicing results in multiple transcripts variants encoding different isoforms.
- Synonyms:** CA150; TAF2S; Urn1
- Note:** Immunogen Sequence Homology: Human: 100%; Rat: 93%; Mouse: 93%; Dog: 86%; Pig: 86%; Horse: 86%; Bovine: 86%; Rabbit: 86%
- Protein Families:** Stem cell - Pluripotency, Transcription Factors
- Protein Pathways:** Spliceosome
- Product images:**



WB Suggested Anti-TCERG1 Antibody Titration: 0.2-1 ug/ml; ELISA Titer: 1: 1562500; Positive Control: HepG2 cell lysate. TCERG1 is supported by BioGPS gene expression data to be expressed in HepG2