

## Product datasheet for **TA343540**

### MED6 Rabbit Polyclonal Antibody

#### Product data:

Product Type:	Primary Antibodies
Applications:	WB
Recommended Dilution:	WB
Reactivity:	Human
Host:	Rabbit
Isotype:	IgG
Clonality:	Polyclonal
Immunogen:	The immunogen for Anti-MED6 antibody is: synthetic peptide directed towards the N-terminal region of Human MED6. Synthetic peptide located within the following region: ILNSGSVLDYFSERSNPFYDRTCNNNEVVKMQRLTLEHLNQMVGIEYILLH
Formulation:	Liquid. Purified antibody supplied in 1x PBS buffer with 0.09% (w/v) sodium azide and 2% sucrose. <i>Note that this product is shipped as lyophilized powder to China customers.</i>
Purification:	Affinity Purified
Conjugation:	Unconjugated
Storage:	Store at -20°C as received.
Stability:	Stable for 12 months from date of receipt.
Predicted Protein Size:	28 kDa
Gene Name:	mediator complex subunit 6
Database Link:	<a href="#">NP_005457</a> <a href="#">Entrez Gene 10001 Human O75586</a>
Background:	MED6 is a component of the Mediator complex, a coactivator involved in the regulated transcription of nearly all RNA polymerase II-dependent genes. Mediator functions as a bridge to convey information from gene-specific regulatory proteins to the basal RNA polymerase II transcription machinery. And mediator is recruited to promoters by direct interactions with regulatory proteins and serves as a scaffold for the assembly of a functional preinitiation complex with RNA polymerase II and the general transcription factors.



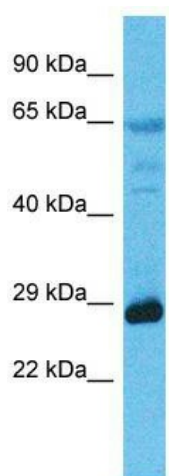
[View online »](#)

**Synonyms:** ARC33; NY-REN-28

**Note:** Immunogen Sequence Homology: Dog: 100%; Pig: 100%; Rat: 100%; Horse: 100%; Human: 100%; Mouse: 100%; Bovine: 100%; Rabbit: 100%; Guinea pig: 100%; Zebrafish: 93%; Yeast: 79%

**Protein Families:** Druggable Genome, Transcription Factors

**Product images:**



Host: Rabbit; Target Name: MED6; Sample Tissue: Esophagus Tumor lysates; Antibody Dilution: 1.0 ug/ml