

Product datasheet for **TA343539**

EOMES Rabbit Polyclonal Antibody

Product data:

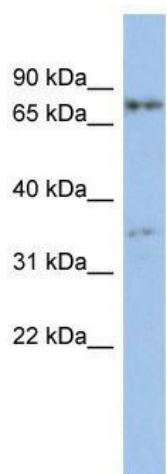
Product Type:	Primary Antibodies
Applications:	WB
Recommended Dilution:	WB
Reactivity:	Human
Host:	Rabbit
Isotype:	IgG
Clonality:	Polyclonal
Immunogen:	The immunogen for anti-EOMES antibody: synthetic peptide directed towards the middle region of human EOMES. Synthetic peptide located within the following region: YTSACKRRRLSPSNSSNENSPSIKCEDINAAEEYSKDTSKGMGGYYAFYTT
Formulation:	Liquid. Purified antibody supplied in 1x PBS buffer with 0.09% (w/v) sodium azide and 2% sucrose. <i>Note that this product is shipped as lyophilized powder to China customers.</i>
Purification:	Affinity Purified
Conjugation:	Unconjugated
Storage:	Store at -20°C as received.
Stability:	Stable for 12 months from date of receipt.
Predicted Protein Size:	73 kDa
Gene Name:	eomesodermin
Database Link:	NP_005433 Entrez Gene 8320 Human O95936
Background:	EOMES is a member of a conserved protein family that shares a common DNA-binding domain, the T-box. T-box genes encode transcription factors involved in the regulation of developmental processes. A similiar gene disrupted in mice is shown to be essential
Synonyms:	TBR2
Note:	Immunogen Sequence Homology: Dog: 100%; Pig: 100%; Rat: 100%; Human: 100%; Bovine: 100%; Horse: 93%; Mouse: 93%; Guinea pig: 93%



[View online »](#)

Protein Families: Embryonic stem cells, ES Cell Differentiation/IPS, Transcription Factors

Product images:



WB Suggested Anti-EOMES Antibody Titration:
0.2-1 ug/ml; ELISA Titer: 1: 1562500; Positive
Control: NCI-H226 cell lysate