

## Product datasheet for **TA343418**

### BARX2 Rabbit Polyclonal Antibody

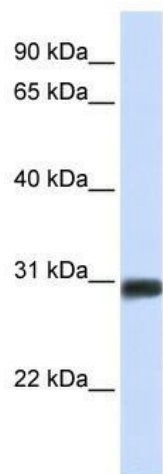
#### Product data:

Product Type:	Primary Antibodies
Applications:	WB
Recommended Dilution:	WB
Reactivity:	Human
Host:	Rabbit
Isotype:	IgG
Clonality:	Polyclonal
Immunogen:	The immunogen for anti-BARX2 antibody: synthetic peptide directed towards the N terminal of human BARX2. Synthetic peptide located within the following region: HCHAELRLSSPGQLKAARRRYKTFMIDEILSKETCDYFEKLSLYSVCPSL
Formulation:	Liquid. Purified antibody supplied in 1x PBS buffer with 0.09% (w/v) sodium azide and 2% sucrose. <i>Note that this product is shipped as lyophilized powder to China customers.</i>
Purification:	Affinity Purified
Conjugation:	Unconjugated
Storage:	Store at -20°C as received.
Stability:	Stable for 12 months from date of receipt.
Predicted Protein Size:	31 kDa
Gene Name:	BARX homeobox 2
Database Link:	<a href="#">NP_003649</a> <a href="#">Entrez Gene 8538 Human</a> <a href="#">Q9UMQ3</a>



[View online »](#)

- Background:** BARX2 is a member of the homeobox transcription factor family. A highly related protein in mouse has been shown to influence cellular processes that control cell adhesion and remodeling of the actin cytoskeleton in myoblast fusion and chondrogenesis. The protein may also play a role in cancer progression. This gene encodes a member of the homeobox transcription factor family. A highly related protein in mouse has been shown to influence cellular processes that control cell adhesion and remodeling of the actin cytoskeleton in myoblast fusion and chondrogenesis. The encoded protein may also play a role in cancer progression.
- Synonyms:** MGC133368; MGC133369
- Note:** Immunogen Sequence Homology: Dog: 100%; Rat: 100%; Horse: 100%; Human: 100%; Mouse: 100%; Bovine: 100%; Rabbit: 100%
- Protein Families:** Transcription Factors

**Product images:**

WB Suggested Anti-BARX2 Antibody Titration: 0.2-1 ug/ml; ELISA Titer: 1: 312500; Positive Control: Human Muscle