

Product datasheet for **TA343338**

PDGF AA (PDGFA) Rabbit Polyclonal Antibody

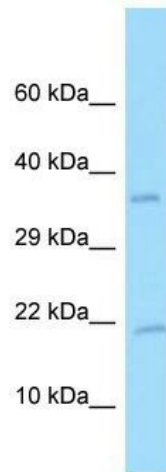
Product data:

Product Type:	Primary Antibodies
Applications:	WB
Recommended Dilution:	WB
Reactivity:	Human
Host:	Rabbit
Isotype:	IgG
Clonality:	Polyclonal
Immunogen:	The immunogen for anti-PDGFA antibody is: synthetic peptide directed towards the C-terminal region of Human PDGFA. Synthetic peptide located within the following region: HRSVKVAKVEYVRKKPKLKEVQVRLEEHLECACATTSLNPDYREEDTDVR
Formulation:	Liquid. Purified antibody supplied in 1x PBS buffer with 0.09% (w/v) sodium azide and 2% sucrose. <i>Note that this product is shipped as lyophilized powder to China customers.</i>
Purification:	Affinity Purified
Conjugation:	Unconjugated
Storage:	Store at -20°C as received.
Stability:	Stable for 12 months from date of receipt.
Predicted Protein Size:	21 kDa
Gene Name:	platelet derived growth factor subunit A
Database Link:	NP_148983 Entrez Gene 5154 Human P04085



[View online »](#)

Background:	The protein encoded by this gene is a member of the platelet-derived growth factor family. The four members of this family are mitogenic factors for cells of mesenchymal origin and are characterized by a motif of eight cysteines. This gene product can exist either as a homodimer or as a heterodimer with the platelet-derived growth factor beta polypeptide, where the dimers are connected by disulfide bonds. Studies using knockout mice have shown cellular defects in oligodendrocytes, alveolar smooth muscle cells, and Leydig cells in the testis; knockout mice die either as embryos or shortly after birth. Two splice variants have been identified for this gene.
Synonyms:	PDGF-A; PDGF1
Note:	Immunogen Sequence Homology: Human: 100%; Dog: 85%; Rat: 85%; Mouse: 85%; Pig: 82%; Guinea pig: 82%
Protein Families:	Druggable Genome
Protein Pathways:	Cytokine-cytokine receptor interaction, Focal adhesion, Gap junction, Glioma, MAPK signaling pathway, Melanoma, Pathways in cancer, Prostate cancer, Regulation of actin cytoskeleton

Product images:

Host: Rabbit; Target Name: PDGFA; Sample Tissue: U937 Whole Cell lysates; Antibody Dilution: 1.0 ug/ml