

Product datasheet for **TA343122**

NQO1 Rabbit Polyclonal Antibody

Product data:

Product Type:	Primary Antibodies
Applications:	WB
Recommended Dilution:	WB
Reactivity:	Human
Host:	Rabbit
Isotype:	IgG
Clonality:	Polyclonal
Immunogen:	The immunogen for anti-NQO1 antibody: synthetic peptide directed towards the C terminal of human NQO1. Synthetic peptide located within the following region: WKKRLENIWDETPLYFAPSSLFDLNFQAGFLMKKEVQDEEKNNKFGLSVG
Formulation:	Liquid. Purified antibody supplied in 1x PBS buffer with 0.09% (w/v) sodium azide and 2% sucrose. <i>Note that this product is shipped as lyophilized powder to China customers.</i>
Conjugation:	Unconjugated
Storage:	Store at -20°C as received.
Stability:	Stable for 12 months from date of receipt.
Predicted Protein Size:	31 kDa
Gene Name:	NAD(P)H quinone dehydrogenase 1
Database Link:	NP_000894 Entrez Gene 1728 Human P15559



[View online »](#)

Background:

This gene is a member of the NAD(P)H dehydrogenase (quinone) family and encodes a cytoplasmic 2-electron reductase. This FAD-binding protein forms homodimers and reduces quinones to hydroquinones. This protein's enzymatic activity prevents the one electron reduction of quinones that results in the production of radical species. Mutations in this gene have been associated with tardive dyskinesia (TD), an increased risk of hematotoxicity after exposure to benzene, and susceptibility to various forms of cancer. Altered expression of this protein has been seen in many tumors and is also associated with Alzheimer's disease (AD). Alternate transcriptional splice variants, encoding different isoforms, have been characterized.

Synonyms:

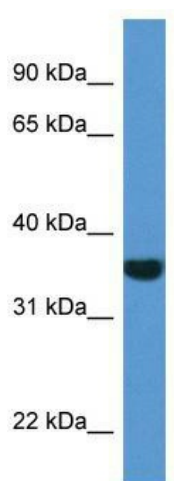
DHQU; DIA4; DTD; NMOR1; NMORI; QR1

Note:

Immunogen Sequence Homology: Human: 100%; Rat: 93%; Rabbit: 91%; Bovine: 86%; Dog: 79%

Protein Families:

Druggable Genome

Product images:

WB Suggested Anti-NQO1 Antibody; Titration: 1.0 ug/ml; Positive Control: 721_B Whole Cell There is BioGPS gene expression data showing that NQO1 is expressed in 721_B