

## Product datasheet for **TA343117**

### Clusterin (CLU) Rabbit Polyclonal Antibody

#### Product data:

Product Type:	Primary Antibodies
Applications:	WB
Recommended Dilution:	WB
Reactivity:	Human
Host:	Rabbit
Isotype:	IgG
Clonality:	Polyclonal
Immunogen:	The immunogen for anti-CLU antibody: synthetic peptide directed towards the C terminal of human CLU. Synthetic peptide located within the following region: CREILSVDCSTNNPSQAKLRRELDESLQVAERLTRKYNELLKSYQWKMLN
Formulation:	Liquid. Purified antibody supplied in 1x PBS buffer with 0.09% (w/v) sodium azide and 2% sucrose. <i>Note that this product is shipped as lyophilized powder to China customers.</i>
Conjugation:	Unconjugated
Storage:	Store at -20°C as received.
Stability:	Stable for 12 months from date of receipt.
Predicted Protein Size:	58 kDa
Gene Name:	clusterin
Database Link:	<a href="#">NP_001822</a> <a href="#">Entrez Gene 1191 Human P10909</a>
Background:	The protein encoded by this gene is a secreted chaperone that can under some stress conditions also be found in the cell cytosol. It has been suggested to be involved in several basic biological events such as cell death, tumor progression, and neurodegenerative disorders. Alternate splicing results in both coding and non-coding variants.
Synonyms:	AAG4; APO-J; APOJ; CLI; CLU1; CLU2; KUB1; NA1; NA2; SGP-2; SGP2; SP-40; TRPM-2; TRPM2
Note:	Immunogen Sequence Homology: Horse: 100%; Human: 100%; Rabbit: 91%; Pig: 86%; Rat: 86%; Mouse: 86%; Guinea pig: 86%



[View online »](#)

Protein Families: Druggable Genome, Secreted Protein

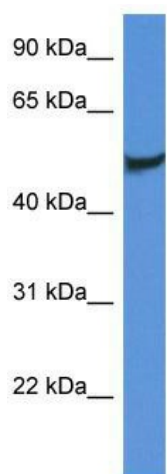
**Product images:**



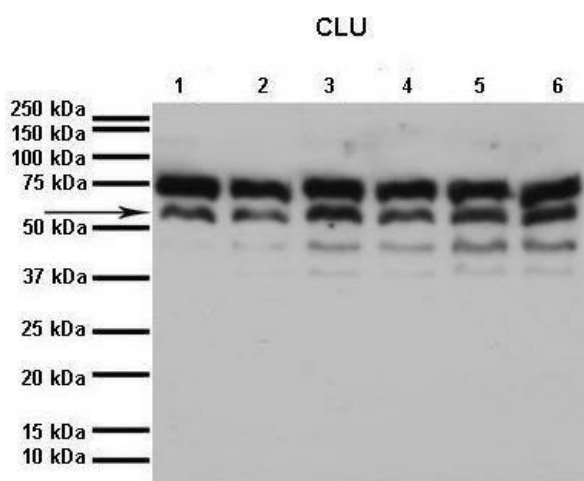
equine cartilage explants

**Legend**

U = Untreated equine cartilage  
 IL = IL-1 $\beta$  treated equine cartilage  
 T = TNF- $\alpha$  + IL-1 $\beta$  treated equine cartilage



CLU antibody validated by WB using Fetal Brain Lysate at 1  $\mu$ g/ml.



Lanes: 1. 40 ug human HK2 cell (kidney proximal tubular cell line) lysate; 2. 40 ug H<sub>2</sub>O<sub>2</sub> treated human HK2 Cell lysate; 3. 40 ug H<sub>2</sub>O<sub>2</sub> treated human HK2 Cell lysate; 4. 40 ug H<sub>2</sub>O<sub>2</sub> treated human HK2 Cell lysate; 5. 40 ug H<sub>2</sub>O<sub>2</sub> treated human HK2 Cell lysate;