

Product datasheet for **TA343105**

MVD Rabbit Polyclonal Antibody

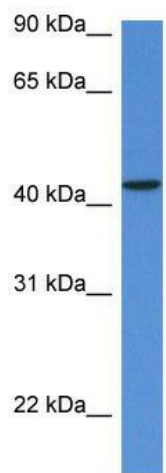
Product data:

Product Type:	Primary Antibodies
Applications:	WB
Recommended Dilution:	WB
Reactivity:	Human
Host:	Rabbit
Isotype:	IgG
Clonality:	Polyclonal
Immunogen:	The immunogen for anti-MVD antibody: synthetic peptide directed towards the N terminal of human MVD. Synthetic peptide located within the following region: VGQPRQLQACLREIRCLARKRRNSRDGDPLPSSLSCKVHVASVNNFPTAAG
Formulation:	Liquid. Purified antibody supplied in 1x PBS buffer with 0.09% (w/v) sodium azide and 2% sucrose. <i>Note that this product is shipped as lyophilized powder to China customers.</i>
Conjugation:	Unconjugated
Storage:	Store at -20°C as received.
Stability:	Stable for 12 months from date of receipt.
Predicted Protein Size:	43 kDa
Gene Name:	mevalonate diphosphate decarboxylase
Database Link:	NP_002452 Entrez Gene 4597 Human P53602
Background:	The enzyme mevalonate pyrophosphate decarboxylase catalyzes the conversion of mevalonate pyrophosphate into isopentenyl pyrophosphate in one of the early steps in cholesterol biosynthesis. It decarboxylates and dehydrates its substrate while hydrolyzing ATP.
Synonyms:	FP17780; MDDase; MPD
Note:	Immunogen Sequence Homology: Human: 100%
Protein Pathways:	Metabolic pathways, Terpenoid backbone biosynthesis



[View online »](#)

Product images:



WB Suggested Anti-MVD Antibody; Titration: 1.0 ug/ml; Positive Control: Fetal Heart